

BEAVERFIT
SPECIAL OPERATIONS EQUIPMENT

**TRAINING
COMPLEXES**

BEAVERFIT TRAINING COMPLEXES

Ranging from live-fire or simunition shoot houses to combat towns and ship simulators, BeaverFit's world-class Training Facilities are custom designed and fabricated for every location, enabling focused preparation for modern-day tactical operations and exercises.

All BeaverFit Special Operations Equipment is purpose built to meet each client's unique mission essential tasks and training requirements. Our collaborative requirements-based design-and-build process enables projects ranging from relatively simple, small footprint single modality training solutions to large, multi-modality, design-intensive facilities and training complexes.

Current BeaverFit Training Facility projects include:

- Dense urban combat towns
- High fidelity suburban combat towns
- Ship simulators (land based and afloat)
- Multi-story ballistic shoot houses
- Multi-story simunition shoot houses

WE CREATE WHAT DOES NOT YET EXIST

BEAVER FIT
SPECIAL OPERATIONS EQUIPMENT

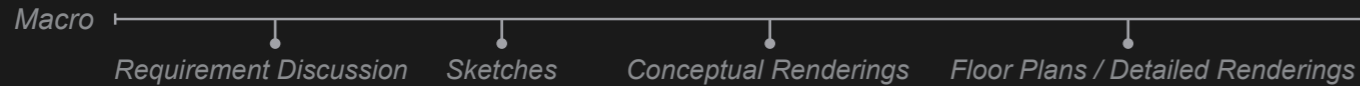
BeaverFit Urban
Training Complex
Albuquerque, USA



COLLABORATIVE DESIGN PROCESS

BeaverFit SOE Complexes are custom designed in consultation with each customer to meet their specific unit and mission requirements. Each Complex includes components that create realistic high stress and high heart rate environments to simulate the various challenges faced in true operational and deployed settings.

General Process Flow:



Key Design Factors:

1. ENVIRONMENT

- Urban/Suburban
- Rural
- Maritime

2. BALLISTICS

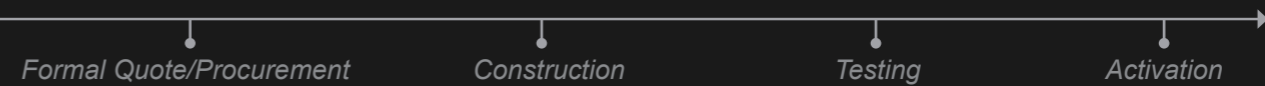
- Live Fire
- Simunition
- Non-Ballistic

3. RECONFIGURABILITY

- Maximum reconfigurability
- Maximum ease of use
(interior and exterior options)
- Non-reconfigurable

DEFINE REQUIREMENTS | IDENTIFY CHALLENGES | CREATE SOLUTIONS | PROTOTYPE & TEST | EXECUTE

Throughout this rigorous and collaborative design process, BeaverFit's SOE team will engage with key stake-holders and actual end-users to ensure a thorough understanding of intended usage, unique challenges and all training requirements.



4. SKILL-SPECIFIC PACKAGES

- Targetry (autonomous, reactive, dumb)
- Methods of Entry (doors, windows, bays)
- Climbing (urban, natural, artificial)
- Air Delivery

5. ATMOSPHERICS

- Sound
- Smoke
- Smell
- Light
- External Wraps
- Props/Furniture
- Burn Cars

6. AFTER ACTION REVIEW

- CCTV
- Review Videos
- Shooter Biometrics
- Review/Viewing Room/Structure

1. ENVIRONMENT

BeaverFit Complexes are designed to simulate any environment. Currently most SOE Complexes replicate one of the following environments.

URBAN / SUBURBAN



RURAL



MARITIME



2. BALLISTICS

SOE Facilities can be outfitted from the full spectrum of ballistic shielding solutions, from zero SDZ enclosures to bullet traps.

LIVE FIRE



SIMUNITION / BLANKS



NON-BALLISTIC



3. RECONFIGURABILITY

Reconfigurability is a critical feature of any Training Complex, as training repeatedly on the same structure can lead to diminishing returns as “muscle memory” sets in and trainees become conditioned to the layout. Configurability options include panel and post wall systems for ultimate reconfigurability to 3-way interior and exterior swinging gates for maximum ease of use.

MODULAR PANELS



INTERIOR: 3-WAY GATES



EXTERIOR: 3-WAY GATES



4. SKILL-SPECIFIC PACKAGES

BeaverFit's Training Complexes can be further customized and fine tuned with features designed to facilitate special skills training. Special Skills options include Basic and Advanced Targetry, Methods of Entry, Climbing and Air Delivery.

TARGETRY



METHODS OF ENTRY



CLIMBING



AIR DELIVERY



5. ATMOSPHERICS

Atmospherics targeting all 5 basic human senses enable high fidelity simulations of combat situations and geo-diverse environments, creating the most realistic and effective training solution possible.

EXTERNAL WRAPS



SMOKE



LIGHT / SOUND



PROPS



6. AFTER ACTION REVIEW

BeaverFit's Training Facilities can be equipped with a full range of after action review solutions, from basic CCTV and monitoring systems to real-time biometric tracking and dedicated viewing and command and control rooms.





Beaverfit Urban
Sprawl Tactics Facility
Catterick, UK

URBAN TRAINING COMPLEXES

BeaverFit's UTC and CQC/CQB facility solutions are entirely customizable, both in terms of size/layout and internal functionality and shooter flow. These shipping container based solutions can incorporate any BeaverFit SOE training obstacles and features, to include the elevator lift shaft, urban climbing and air delivery training stations. Modular internal framing enables reconfigurable rooms and numerous training scenarios. Full audio-visual integration enables on-site command and control, as well as live instructor assessment utilizing the latest in personal hand-held devices (i.e. live video iPad® monitoring and control, etc.).



SHOOT HOUSES

Designed with both the shooter's and the instructor's perspectives in mind, BeaverFit SOE shoot houses perfectly balance safety and functionality. From a small, "intro to room clearing" structure up to multi-story facilities, reconfigurable features enable maximum training value.



MODULAR SKILLS HOUSE

Custom designed in concert with both UK and US forces, BeaverFit Skill Houses are designed for close quarters and urban combat training, with heavy reconfigurability and complete control of lighting and other atmospheric conditions.



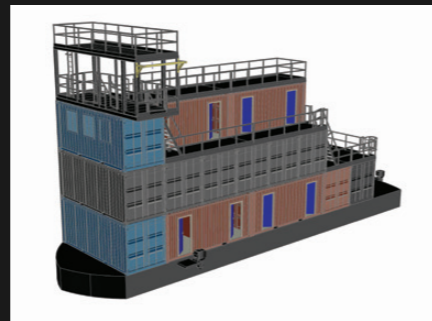
DEPLOYABLE MODULAR SKILLS HOUSE

With the ongoing increase of "by, with, and through" partner nation training, there is a critical need for truly deployable facilities. With a focus on reconfigurability and modularity, BeaverFit's shipping container based deployable solutions can be delivered and set-up anywhere in the world.



MARITIME SHIP SIMULATOR

The maritime domain is particularly challenging for assaulters. Though the fundamental skill sets are the same, the unique challenges of this environment require specialized training and skill mastery.



K9 SKILL HOUSE

These training facilities incorporate canine specific features, including varying types of flooring to create olfactory and tactile stimuli, as well as upper level grating to signal elevation changes and integrated trap doors to enable role players to engage with the canines in a variety of ways.



FIELD FORTIFICATION HOUSE

BeaverFit Facilities can be customized to enable any of our solutions to incorporate field fortifications. Utilizing special reinforcements and anchoring points, fortifications and defensive elements can be added to harden any training structure.





WE CREATE WHAT DOES NOT YET EXIST

WWW.BEAVERFIT.COM

UK, EMEA, LATAM & APAC

BEAVERSOE OLD MILL FARM
WALKMILLS CHURCH STRETTON UK
TELEPHONE: +44 (0) 1694 751265

NORTH AMERICA

BEAVERFIT USA
120 WOODLAND AVE, SUITE D - RENO, NV USA
TELEPHONE: +1 (775) 824-6311

PATENTS & TRADEMARKS

BEAVERFIT PRODUCTS ARE SUBJECT TO PATENTS AND/OR PATENT APPLICATIONS IN TERRITORIES AROUND THE WORLD. BEAVERFIT IS A REGISTERED TRADEMARK OF BEAVERFIT LTD AND ITS AFFILIATES ('BEAVERFIT') AROUND THE WORLD. ALL OTHER TRADEMARKS REFERENCED ARE TRADEMARKS OF THEIR RESPECTIVE OWNERS.

QUALITY STANDARDS

BEAVERFIT OPERATES A FULL QUALITY MANAGEMENT SYSTEM.
190050-01 08/19

DISCLAIMER

THE INFORMATION CONTAINED IN THIS PUBLICATION IS INTENDED SOLELY TO PROVIDE GENERAL GUIDANCE. THE RIGHT IS RESERVED TO MAKE CHANGES TO THIS DOCUMENT WITHOUT NOTICE AT ANY TIME. THIS MATERIAL IS SUBJECT TO COPYRIGHT PROTECTION.