

BEAVERFIT
SPECIAL OPERATIONS EQUIPMENT

**RANGE +
BREACHING
SOLUTIONS**

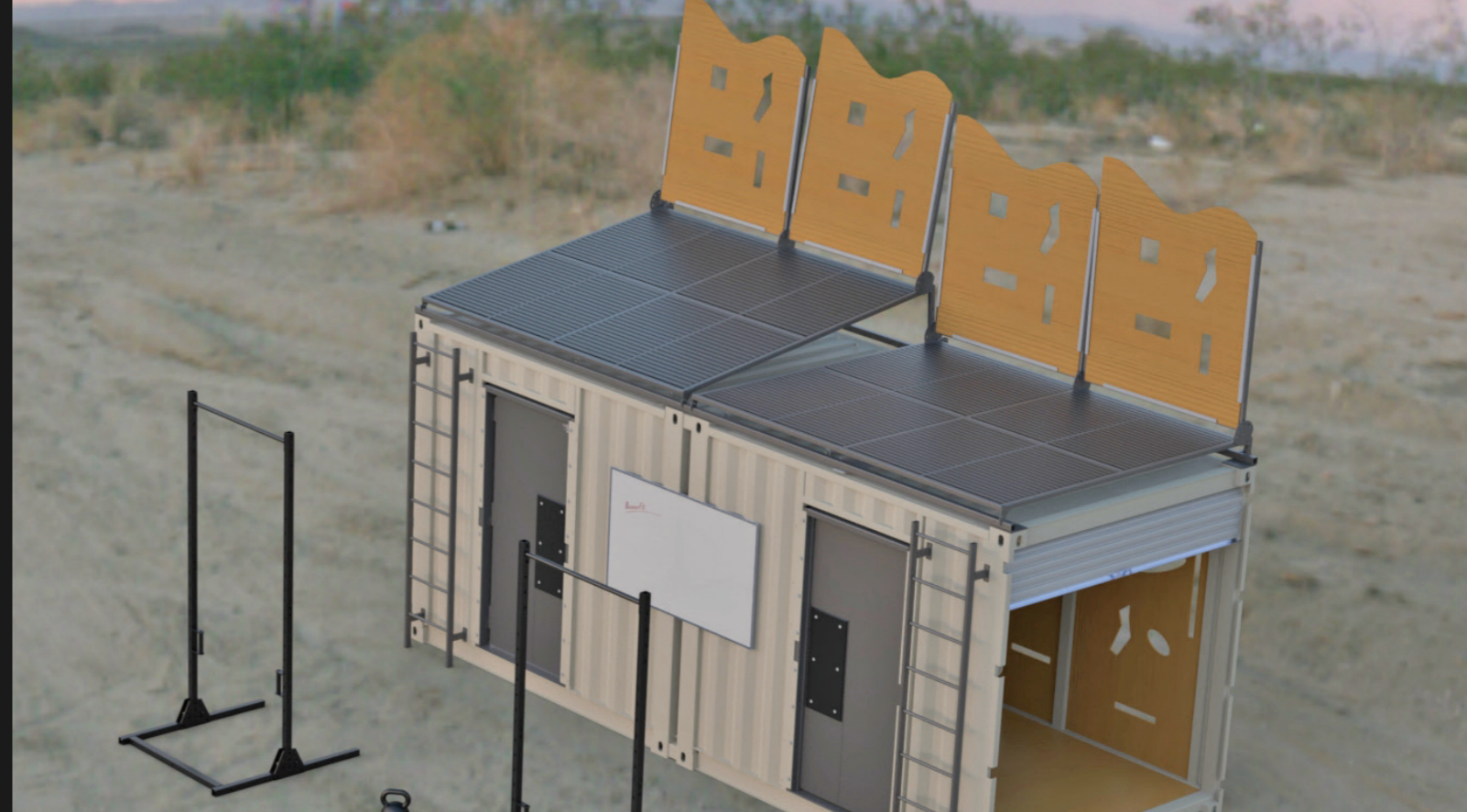
BEAVERFIT RANGE SOLUTIONS

BeaverFit Special Operations Equipment provides tactical training and support solutions to our warfighters: professionals whose lethality and survivability are dependent on their marksmanship, maneuvering and close combat skills. Recognizing that our customers are serious professionals engaged in serious work, BeaverFit SOE Range Solutions are highly customized to each end user's specific training needs and requirements. We strive to ensure our products are as tough, reliable and adaptable as those who depend on them.

Military personnel intimately understand the importance of urban combat skills such as firing from non-traditional positions and making forced entries. BeaverFit SOE Range Solutions are designed specifically for the development of these combat skills. As with all SOE solutions, human performance components are also included to replicate the high heart rate environment of combat.

WE CREATE WHAT DOES NOT YET EXIST

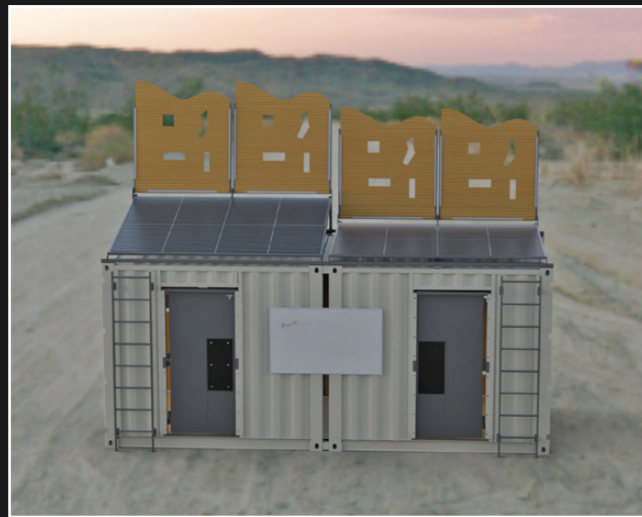
BEAVER FIT
SPECIAL OPERATIONS EQUIPMENT



BeaverFit Range Solutions are custom designed in consultation with each customer to meet their specific unit and mission requirements. Each solution includes components that create realistic high stress and high heart rate environments to simulate the various challenges faced in true operational and deployed settings.

RANGE LOCKER

The BeaverFit RANGE LOCKER enables next level training for close and medium distance marksmanship. Developed around the “train as you fight” concept, this unique solution includes human performance equipment to create a high heart rate training environment with the ability to manually breach doors, fire from behind barricades, on high-angle pitchable roof platforms, or on removable unstable shooting platforms. The integrated barricade receivers accept standard size plywood sheets, enabling easy and effective change-outs of barricade and aperture designs as needed.



MOBILE RANGE LOCKER

The BeaverFit Mobile Range Locker combines all of the critical features of the Range Locker and packages them together into a much smaller, mobile footprint. The rugged, off-road trailer can be pulled using either a ball or pintle hitch and comes with a complement of steel targetry. Take your range on (or off) the road with you!



BREACH LOCKER

Units that utilize Methods of Entry have significant variation in which methods they utilize. As such, we have created a number of different bespoke breaching lockers. Our capabilities span manual, mechanical/hydraulic, exothermic, ballistic, and explosive methods of entry.



MANUAL BREACH DOOR

The new BeaverFit Ram/Pry Breaching Door is a significant update to existing manual breach doors.

A true Ram/Pry door, it swings open in both directions, assisted by an adjustable jam, with strike faces on both sides. Locking dowels inserted through the throw and accurately placed deadbolts combined with a physical knob force correct tool placement and utilization.

Because it swings both ways and has dual strike faces, a single door can be used to train for both left- and right-hand opening doors.

The BeaverFit Manual Breach Door can be mounted into any of our structures or operate independently in freestanding mode.





WE CREATE WHAT DOES NOT YET EXIST

WWW.BEAVERFIT.COM

UK, EMEA, LATAM & APAC

BEAVERSOE OLD MILL FARM
WALKMILLS CHURCH STRETTON UK
TELEPHONE: +44 (0) 1694 751265

NORTH AMERICA

BEAVERFIT USA
120 WOODLAND AVE, SUITE D - RENO, NV USA
TELEPHONE: +1 (775) 824-6311

PATENTS & TRADEMARKS

BEAVERFIT PRODUCTS ARE SUBJECT TO PATENTS AND/OR PATENT APPLICATIONS IN TERRITORIES AROUND THE WORLD. BEAVERFIT IS A REGISTERED TRADEMARK OF BEAVERFIT LTD AND ITS AFFILIATES ('BEAVERFIT') AROUND THE WORLD. ALL OTHER TRADEMARKS REFERENCED ARE TRADEMARKS OF THEIR RESPECTIVE OWNERS.

QUALITY STANDARDS

BEAVERFIT OPERATES A FULL QUALITY MANAGEMENT SYSTEM.
190052-01 08/19

DISCLAIMER

THE INFORMATION CONTAINED IN THIS PUBLICATION IS INTENDED SOLELY TO PROVIDE GENERAL GUIDANCE. THE RIGHT IS RESERVED TO MAKE CHANGES TO THIS DOCUMENT WITHOUT NOTICE AT ANY TIME. THIS MATERIAL IS SUBJECT TO COPYRIGHT PROTECTION.