



AAR[®]

Mobility Systems

TOTAL SOLUTION PROVIDER



Table of Contents



ABOUT AAR

- Capabilities 2
- Core Products 3
- Core Competences 4
- Service & Support 5
- Notable Contracts 6



APPLICATIONS & INTEGRATION

- Command Posts 9
- Medical 13
- Life Support Area 15
- Maintenance 20
- Weapons & Security 25



AAR INTEGRATED TECHNOLOGIES

- Capabilities 28
- Certifications 29



CONTAINERS

- Features 30
- Transportability 31
- ISU® 32
- EISU 41
- Accessories 42



SHELTERS

- Features 44
- Comparisons 45
- Air Mobile Shelters 46
- 20-Foot ISO Shelters 49
- Vehicle Mounted Shelters 53
- Accessories 58



PALLETS

- Features 60
- 463L Pallets 61
- Air Cargo Pallets 62
- Seat Pallets 63
- Accessories 64



SPACEMAX®

- Features 66
- Series Comparisons 67
- S100 Series 68
- S10, S20, & S200 Series..... 69



PROCUREMENT & CONTACT INFO

- Facilities 70
- Procurement 71
- NLSE Contract 72
- Contact Us 74



Mobility Systems

Total Solution Provider

AAR Mobility Systems is a division of AAR Corp., a multi-billion dollar global provider of defense, aerospace, and commercial aircraft products and services. AAR Mobility Systems designs, manufactures, tests, integrates and services products to support military and disaster relief operations. From concept through solution development, testing and lifecycle support, we provide our customers with the **Total Solution** to facilitate their mission. Our solutions include containers, shelters and palletized systems, coupled with full integration and accessories to support missions and applications ranging from command and control, weapons storage and transport, to life support and medical. Our **Total Solution** approach to every requirement ensures we will provide a unique solution tailored to your mission and provide impeccable support to help you deploy and operate faster and more efficiently, anywhere, anytime.

CORE COMPETENCIES

ENGINEERING & DESIGN

Our full in-house engineering and design team translates customer requirements into customized solutions using cutting-edge technologies. With prototyping capabilities, our team is able to create innovative products to meet mission requirements.

MANUFACTURING & TESTING

Our State of the Art manufacturing expertise, including friction stir-welding, robotic welding, lean production methods, hot-press bonding, and surge capabilities, creates robust mobility solutions for today's warfighter. In-house MIL-SPEC testing ensures our products are certified to the most current DoD specifications.

INTEGRATION

We have a long history of integrating our core products with enhanced capabilities ranging from basic power, HVAC and accessories to the latest command and control technologies.

SERVICE & SUPPORT

Our globally deployable technicians provide high-quality after-market support for our products, as well as the products of other manufacturers.



CORE PRODUCTS



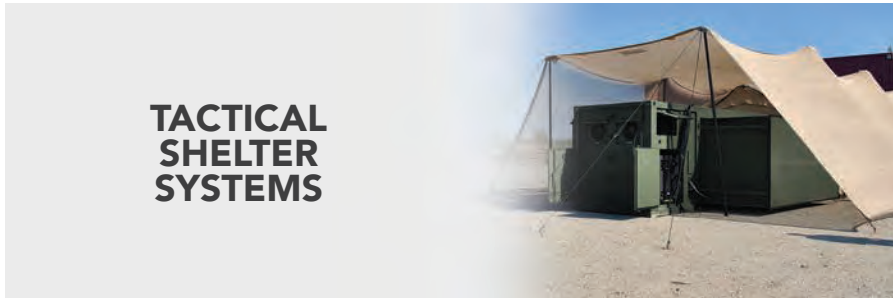
ISU[®] CONTAINERS

ISU CONTAINERS (Internal Airlift/Helicopter Slingable Container Unit) lightweight, 1-pallet-position, standard and specialty containers for customized air-mobile shipping and storage of equipment, spare parts, and high value cargo.



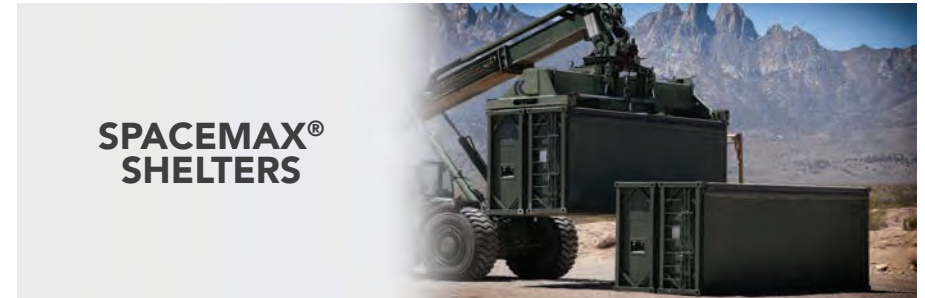
ACCESSORIES

ACCESSORIES comprehensive line of products available to enhance our containers, shelters, and palletized systems.



TACTICAL SHELTER SYSTEMS

TACTICAL SHELTER SYSTEMS standard and custom 1- and 2-pallet position air-mobile configurations and 20-foot ISO shelters with proprietary features for rapid aircraft on- and off-load and up to 3:1 expansion, and shelters that are directly mountable to their carrier vehicles.



SPACEMAX[®] SHELTERS

SPACEMAX[®] SHELTERS lightweight and durable 20-foot ISO platform with up to 3:1 expansion that uses revolutionary new technologies to address a wide range of missions.

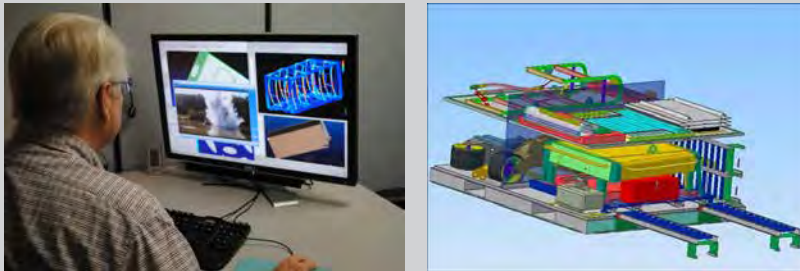


PALLETIZED SYSTEMS

PALLETIZED SYSTEMS 463L air cargo pallets, custom pallets and platforms for short term storage and quick movement of cargo, plus pallets for air-transporting ISO Containers and quick-change palletized seat systems for all military transport aircraft.

Core Competencies

ENGINEERING & DESIGN



- Structural design and analysis
- Translation of customer requirements into customized solutions using cutting-edge technologies
- Design and analysis of composite structures and panels
- Prototyping of new and integrated shelters and containers to meet mission requirements
- Strategic level planning to support integrated systems in unique acquisition plans
- Lifecycle support for extending life and expanding capabilities to include re-purposing existing fleets

INTEGRATION



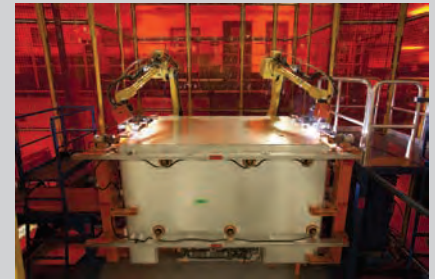
- Equipment Integration using State of the Art COTS Equipment
- Development of customized modules to support each customer's unique operations in hostile and remote locations
- Total Solution Provider, outfitting containers and shelters with the auxiliary equipment required to meet mission requirements
- Enhancing AAR core products to provide mission ready solutions using shelving, racking, kitting, casing, power, HVAC, lighting, solar and C2 equipment
- Integration of modification for legacy or new equipment
- Asset Management and Logistics Planning

MANUFACTURING & TESTING



FRICTION STIR WELDING

- Retains 70-90% of the original materials strength
- Solid state welding process
- Improved static strength and fatigue properties
- Very little heat input – reduces distortion
- No added filler metal – mitigates unnecessary weight



ROBOTIC WELDING

- 40% increase in travel speed vs. manual welding
- Average 40-50°F reduction in bond-line temperature
- Reduction in welding/fabrication cycle time
- Turner eliminates manual manipulations & improves efficiency



PRODUCTION

- Four facilities with over 600,000 sq. ft.
- History of surge capability
- Lean production methods to build products in quantities of one to several thousand



IN-HOUSE MIL-SPEC TESTING

- G-force aircraft load analysis (One of two approved G-force facilities in the continental United States)
- Water Tightness Testing on shelters and containers
- EMI/RFI Testing on shelters and containers
- CSC Testing



Service & Support

In addition to designing and manufacturing a wide range of shelters, containers, and pallet systems, AAR Mobility Systems also provides high-quality after-market support for our products, as well as the products of other manufacturers. Supported by years of manufacturing excellence, we design solutions, integrate custom configurations, extend the life of systems, and support mission requirements from design through completion. We provide you the necessary operational capability today and for the future.

MAINTENANCE & REPAIR SERVICES

- Inspection and serviceability assessment for shelters, containers, and pallets
- On-site and field repair capability
- Depot level support available
- Repair of ancillary equipment:
 - Air conditioners
 - Environmental control units
 - Refrigeration units
 - Generators
- Repair and re-certification of ISO shelters to CSC standards
- Average savings is 5-to-1 for repair versus replacement

MOBILE TRAINING SERVICES

- Training for installation, operation and maintenance of:
 - Shelters
 - Containers
 - Pallets
 - Ground support equipment

Notable Contracts



US AIR FORCE
NEW & M&O
463L HCU-6/E PALLETS



DLA TROOP SUPPORT
CONTAINERS, SHELTERS,
& ACCESSORIES



US ARMY
STANDARD AUTOMOTIVE
TOOL SETS (SATS)
20' SHELTER



US ARMY
LIGHTWEIGHT
MULTIPURPOSE SHELTER
(LMS)

1963

2000

2001

2003

2004

2007

2011

2016

US ARMY
CK MECC
FIELD KITCHEN



US ARMY
FAMILY OF MEDIUM
TACTICAL VEHICLES
(FMTV)



US ARMY/MARINE CORPS
PETROLEUM QUALITY
ANALYSIS SYSTEMS
(POAS)



NSPA NATO
SHELTERS, CONTAINERS,
& ACCESSORIES



INITIAL DATE	CUSTOMER	CONTRACT
2016	NSPA NATO Support Agency	Airlift/Helicopter Slingable (ISU) Containers
2016	Army Contracting Command	Next Generation Automatic Test Systems (NGATS)
2016	DLA Troop Support	Tent and Textile Commercial Soft Shelter Systems and Accessories
2011	USMC/US Army	EFK MECC Expeditionary Field Kitchen
2011	US Army	Lightweight Multi-Purpose Shelter (LMS)
2011	USSOCOM	Military Information Support Operations Press-Medium (MISOP-M)
2008	Foreign Military	20' Integrated Expandable & Non-Expandable Aluminum ISO Shelter
2008	USAF/US Army/US Navy	HELAMS & HESAMS to Joint Special Ops Command (JSOC)
2007	USMC	Shop Set, Equipment Artillery (Field Artillery)
2007	US Army/USMC	Petroleum Quality Analysis System (POAS)
2007	USMC	Direct Support Electrical Systems Test Set (DSESTS)
2006	USMC	Electro-Optical Maintenance Shelter Complex
2006	USAF	Integrated Airborne Modules
2005	British Embassy	New HCU-6/E Pallets
2005	USMC	MK 1077 Flat Racks
2004	US Army	Standard Automotive Tool Sets (SATS) Non-Expandable 20' ISO Shelter
2003	US Army	Family of Medium Tactical Vehicles (FMTV) M1079 Shop Van & M1087 Expansive Van Shelters
2001	DLA Troop Support	Specialized Shipping/Storage Containers, Shelters and Accessories
2000	GSA Federal Supply Service	Materials/Industrial Service and Supplies – Pre-Engineered/Prefabricated Buildings
2000	US Army	CK MECC Mobile Field Kitchen
1996	US Army	Container Roll-In/Out Platform (CROP) & Flat Racks
1963	US Air Force	New and M&O HCU-6/E Pallets

Applications & Integration

AAR Mobility Systems' fully integrated solutions provide military and civilian leaders with a wide range of capabilities to address their complete spectrum of mission needs with the flexibility to customize for each specific requirement. Combining combat proven systems with the latest technologies results in reliable, robust and effective systems. The following pages describe some of our many integrated solutions for specific applications.

- Command Posts
- Medical
- Life Support Area
- Maintenance
- Weapons and Security





AAR Mobility Systems combines combat proven platforms with years of military experience to develop and integrate the preeminent command posts available in the market. Our fully integrated systems contain shelter, power, HVAC, lighting, and C2 equipment, and deploy in minutes with minimal manpower. With sizes ranging from 43 sq. ft. to 332 sq. ft., and a complete range of air, land or sea transportable capabilities, we are the *Total Solution Provider* to synergize all needs into an ideal solution.

EXPANDABLE LIGHT AIR MOBILE SHELTER [ELAMS] TOC

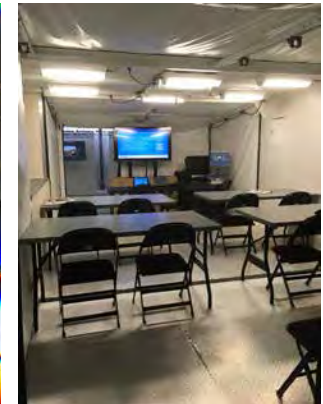


FEATURES

- Comes with High Speed Mobility Wheel Set (HSMWS) (including tie down chains)
- Equipped with air conditioning, heating, and dehumidification systems
- Diesel powered 20kW Genset with 120/208VAC, 3-PH-Y, 60Hz power to provide auxiliary power supply
- Special input panel provided for the attachment of communication cables to the ELAMS
- See page 48 for more information about the base ELAMS shelter

DIMENSIONS

EXTERIOR STOWED	96"W x 178"L x 96.25"H
INTERIOR STOWED	92.6"W x 174"L x 87"H (112 sq.ft. floor)
EXTERIOR DEPLOYED	266"W x 178"L x 96.25"H
INTERIOR DEPLOYED	263"W x 174"L x 87"H (319 sq.ft. floor)



ELAMS TOC COMMAND POST

TARE WEIGHT

8,455 lbs. (plus 3,500 lbs for HSMWS)

ELAMS TOC BRIEFING ROOM

TARE WEIGHT

7,925 lbs. (plus 3,500 lbs for HSMWS)



FEATURES

- Communication racks
- Includes generator and ECU
- Integrated antenna/mast
- See page 48 for more information regarding the HELAMS



U.S. AIR FORCE PHOTO/TECH. SGT. SCOTT T. STURKOL

DIMENSIONS	
EXTERIOR STOWED	96"W x 178"L x 96.25"H
INTERIOR STOWED	79.7"W x 174.3"L x 87"H
EXTERIOR DEPLOYED	258"W x 178"L x 96.25"H
INTERIOR DEPLOYED	256"W x 174.3"L x 87"H
WEIGHT	MAX GROSS WEIGHT
9,415 lbs.	15,000 lbs.



U.S. AIR FORCE PHOTO/TECH. SGT. SCOTT T. STURKOL



FEATURES

- Equipped with tie-down rings at four upper corners
- Securable interior emergency release built into double personnel door at rear
- Personnel door on each of the expandable sides of the M1087 EVAN
- 120/208V/3PH/100A/60Hz power distribution panel that controls permanently mounted 120V electrical outlets placed along walls
- Standard lighting package includes 120V fluorescent lights and a 24VDC emergency and blackout light system

M1079 SHOP VAN	
EXTERIOR DIMENSIONS	187"L x 95"W x 85"H
WEIGHT	MAX GROSS WEIGHT
4,060 lbs.	8,360 lbs.

M1087 EVAN	
EXTERIOR DIMENSIONS STOWED	278"L x 96"W x 96"H
EXTERIOR DIMENSIONS DEPLOYED	278"L x 164"W x 96"H
WEIGHT	MAX GROSS WEIGHT
9,415 lbs.	15,000 lbs.

SENIOR LEADERS IN-TRANSIT PALLET [SLIP]

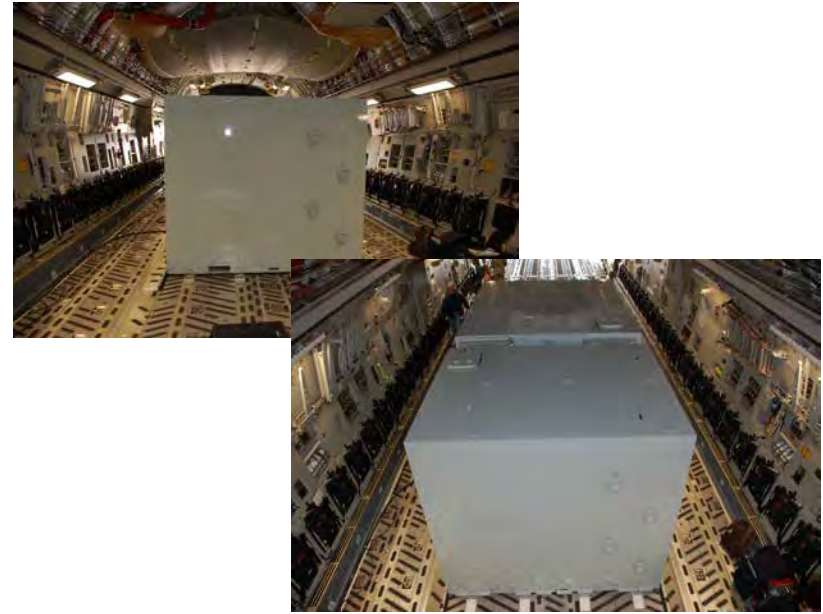


FEATURES

- U.S.A.F. Air Worthiness Certification issued 11/14/2007
- Has a cargo pallet mechanical foundation that is compatible with a standard 88" x 108" 463L cargo-handling system and existing USAF material handling equipment
- Equipped with four (4) 250 lb. capacity reclining first-class style airline seats, each with integral foot rests
- Interfaces with aircraft's electrical system to provide communications, lighted work desk for front row passengers, reading lights on all four seats, power outlets for computers and other accessories; Back row passengers are equipped with tray tables that are stowed in seat armrest
- May be air transported at maximum gross weight of 2,280 pounds, including seated passengers and carry-on items being transported on the SLIP
- Seats and seat attachment points provide up to 9.0G forward restraint, allowing personnel to occupy seats during all phases of flight, including takeoff and landing



SENIOR LEADER IN-TRANSIT COMMAND CAPSULE [SLICC]



FEATURES

- Aluminum/sandwich composite panel construction and a cargo pallet mechanical foundation that is compatible with a standard 88" x 108" 463L cargo-handling system and existing USAF material handling equipment
- Climate control that enables focused operation isolated from the aircraft interior ambient temperature and noise
- Power interface that includes freq converter to enable standard 120VAC/60Hz power inside from the aircraft power input
- Personnel access door with cipher locks - 26.5" x 70.5" approximate opening



Conference Module



Berthing Module

DIMENSIONS

DIMENSIONS	
CONFERENCE MODULE	127" L x 108" W x 92" H
BERTHING MODULE	88" L x 108" W x 92" H

Whether medical teams are on site for disaster relief or remote medical services, AAR Mobility Systems' shelters provide a safe and rapidly deployable environment for teams to operate and provide care. With configurations such as hospital wards, labs, or operating rooms, our shelters can provide the wounded with immediate access to life-saving procedures.



MEDICAL



MECC Shelter configured as a hospital ward

FEATURES

- The MECC shelter can be configured to support medical and hospital needs
- See page 52 for more information regarding the base MECC shelter

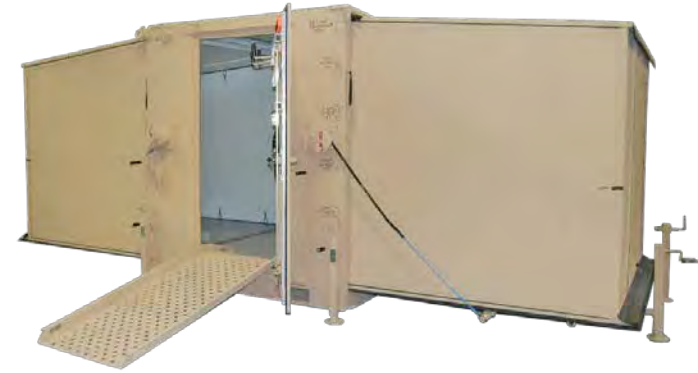


MECC Shelter configured as a lab



MECC Shelter configured as an operating room

DIMENSIONS	
EXTERIOR STOWED	96"W x 240"L x 96"H
EXTERIOR DEPLOYED	264"W x 240"L x 96"H
INTERIOR STOWED	160 sq. ft.
INTERIOR DEPLOYED	400 sq. ft.
TARE WEIGHT	MAX GROSS
9,000 lbs.	24,000 lbs.



FEATURES

- Aluminum diamond plate flooring with single drain installed for cleaning purposes
- Stainless steel sink
- Work table
- Power outlets
- 6/E rings installed on each rear wing wall for attaching supplies
- External 24K ECU for minimal intrusion into shelter
- Relocatable commercial grade 12kW Diesel Generator included
- LED Examination Light with multiple mounting locations to provide 4200 foot candles at 1 meter
- Ramp for generator to be rolled on/off through main door
- See page 47 for more information regarding the base HESAMS shelter

DIMENSIONS		
EXTERIOR STOWED	88"W x 108"L x 96.25"H	
INTERIOR STOWED	68"W x 100.6"L x 86.5"H	
EXTERIOR DEPLOYED	245.38"W x 108"L x 96.25"H	
INTERIOR DEPLOYED	243"W x 95"L x 86.5"H	
WEIGHT	PAYLOAD	MAX GROSS
5,330 lbs.	4,670 lbs.	15,000 lbs.



AAR Mobility Systems' shelters can be utilized for virtually any Life Support application from kitchen and laundry to ablution and latrine. Our fully integrated solutions address a wide range of missions and can be deployed throughout the world in the harshest conditions to sustain forces or assist in disaster relief.



FEATURES

- Integrated AirFrame canvas into MECC shelter provides additional headroom for heat to escape, eliminates steel poles, and reduces risk of carbon monoxide exposure
- Exhaust fans provides additional air changes
- All appliances are heated by Airtronic burners in closed combustion heat exchangers which eliminates noise and heat contamination
- Modular appliances are stackable



FEATURES

- The Containerized Kitchen provides flexible, efficient, rapidly deployable meal preparation capability in the field
- Capable of supporting 800 soldiers with 3 hot meals per day
- See page 52 for more details about the MECC shelter



DIMENSIONS	
EXTERIOR STOWED	96"W x 240"L x 96"H
EXTERIOR DEPLOYED	264"W x 240"L x 96"H
INTERIOR STOWED	160 sq. ft.
INTERIOR DEPLOYED	400 sq. ft.
TARE WEIGHT	MAX GROSS
9,000 lbs.	24,000 lbs.



Flex Kitchen shown without canvas

FEATURES

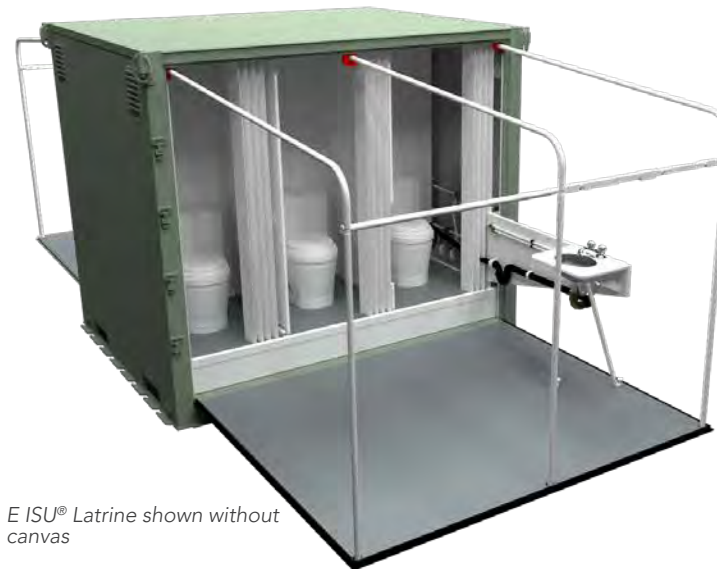
- Integrates reliable kitchen equipment inside the E ISU® container (see page 41 for details on the E ISU®)
- All appliances use the Airtronic burner, increasing efficiency and reducing emissions of pollutants and other noxious fumes
- Capable of serving 300 personnel two hot meals daily using UGR Heat & Serve rations



Airtronic burner



DIMENSIONS		
EXTERIOR STOWED	88"W x 108"L x 91.47"H	
EXTERIOR DEPLOYED	245.20"W x 108"L x 91.47"H	
BASE BOX WEIGHT	PAYLOAD	MAX GROSS
2,500 lbs.	6,985 lbs.	10,000 lbs.



E ISU® Latrine shown without canvas

FEATURES

- Integrated inside the E ISU® container (see page 41 for details about the E ISU®)
- 6 toilets (3 per side)
- 2 sinks (1 per side)
- Hot Water Heater
- Fresh Water Pump
- Fresh Water Connection Hose
- Fresh Water Bladder
- Black Water Waste Pump
- Black Water Connection Hose
- Black Water Bladder



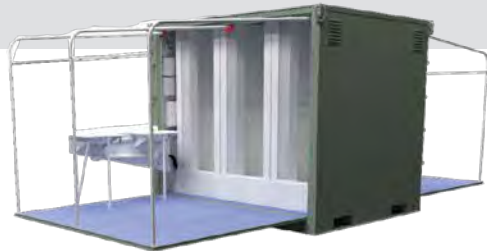
DIMENSIONS		
EXTERIOR STOWED	88"W x 108"L x 91.47"H	
EXTERIOR DEPLOYED	245.20"W x 108"L x 91.47"H	
WEIGHT	PAYLOAD	MAX GROSS
3,015 lbs.	6,985 lbs.	10,000 lbs.

EXPANDABLE ISU® [E ISU®] SHOWER



FEATURES

- Integrated inside the E ISU® container (see page 41 for details about the E ISU®)
- 6 showers (3 per side)
- 4 sinks (2 per side)
- Hot Water Heater
- Fresh Water Pump
- Fresh Water Connection Hose
- Gray Water Waste Pump
- Gray Water Connection
- Gray Water Connection Hose
- Fresh Water Bladder
- Gray Water Bladder



E ISU® Shower shown without canvas

DIMENSIONS

EXTERIOR STOWED			88"W x 108"L x 91.47"H
EXTERIOR DEPLOYED			245.20"W x 108"L x 91.47"H
WEIGHT	PAYLOAD	MAX GROSS	
3,200 lbs.	6,800 lbs.	10,000 lbs.	

EXPANDABLE ISU® [E ISU®] COMBO



FEATURES

- Integrated inside the E ISU® container (see page 41 for details about the E ISU®)
- 3 toilets on one side
- 3 showers on one side
- 3 sinks (2 on one side, 1 on the other)
- Hot Water Heater
- Fresh Water Pump
- Fresh Water Connection Hose
- Gray Water Waste Pump
- Gray Water Connection
- Gray Water Connection Hose
- Black Water Waste Pump
- Black Water Connection Hose
- Fresh Water Bladder
- Black Water Bladder
- Gray Water Bladder



E ISU® Combo shown stowed

DIMENSIONS

EXTERIOR STOWED			88"W x 108"L x 91.47"H
EXTERIOR DEPLOYED			245.20"W x 108"L x 91.47"H
WEIGHT	PAYLOAD	MAX GROSS	
3,115 lbs.	6,845 lbs.	10,000 lbs.	



FEATURES

- 208 VAC three phase electrical power unit
- 53 load capability or 1,034 lbs. in 24 hours
- 65 gallon electric water heater; Auto shut off switch for low water in water heater
- Dryer vents and hose with screens to filter water sediment and prevent rodent intrusion
- Foot valve for pond or stream water pickup
- Self-priming pump for use with a water bladder or used to increase the water pressure in the system
- Awning cover for each side when doors are opened
- See page 33 for more information about the base ISU® 90 container

DIMENSIONS		
EXTERIOR	108"W x 88"L x 91.35"H	
INTERIOR	399 cu. ft.	
WEIGHT	PAYLOAD	MAX GROSS
3,200 lbs.	6,800 lbs.	10,000 lbs.



FEATURES

- System can produce potable water for drinking and cooking from virtually any source of water within a very short period of time
- Four doors - two on each 108" side
- One (1) 20kW generator (other options available)
- One (1) Water purification system
- Six (6) wall-mounted RO tubes
- One (1) Wall-mounted, ultraviolet sterilizer
- One (1) Floor-mounted, water bin holder
- One (1) Auto descalant pump
- One (1) Auto chlorine pump
- Can be scaled up or down in size
- Water polishing can be added
- See page 33 for more information about the base ISU® 90 container

DIMENSIONS		
EXTERIOR	108"W x 88"L x 91.35"H	
TARE WEIGHT	PAYLOAD	GROSS WEIGHT
1,720 lbs.	1,900 lbs. (estimate)	3,620 lbs.
GENERATOR	20kW with critical muffler; Diesel/JP8 fuel requirement; 120/208/3PH/60 Cycle; 50-gallon fuel cell	
WATER PURIFICATION SYSTEM	220/360 VAC; Injection pump; 12 GPM/720 GPH ultraviolet sterilizer; 300 GPH salt water or brackish water	

MAINTENANCE



Maintenance and repair facilities are vital aspects of any mission and AAR's maintenance shelters have become the instrumental solution. Any of our shelters can be utilized as a maintenance facility, but we have a strong history of manufacturing workshops, battery maintenance containers, tire maintenance shelters, and vehicle maintenance shops.



FEATURES

- The battlefield ready Petroleum Quality Analysis System (PQAS) is a mobile fuel testing analysis and certification laboratory based on AAR's proprietary 20-foot ISO shelter design
- EMI-shielded variant of our 20-foot ISO design with segmented mechanical porch, working area, and storage room configuration
- Custom ladder for easy access
- Canvas vestibule for entry into laboratory
- Passed testing at Aberdeen Proving Ground
- Vehicle and trailer mountable
- Catwalk grid above mechanical porch for easy slinging of shelter
- CSC rating: 6-high

DIMENSIONS	
EXTERIOR	240"L x 96"W x 96"H
WORK AREA	84.6 sq. ft.
STORAGE AREA	84.6 sq. ft.
MECHANICAL PORCH	27.3 sq. ft.
WEIGHT	MAX GROSS
6,340 lbs.	15,000 lbs.



FEATURES

- On-Board Generator
- Environmental Control Unit
- Custom storage racks ready to accept tools and equipment
- Tested and proven at Aberdeen Proving Ground
- 6-High CSC-certification
- Unique features that permit rapid loading into a C-130 or larger transport aircraft without supplemental pallets or tie-downs
- U.S. and Foreign Patented Integrated Jacks



DIMENSIONS	
EXTERIOR	240"L x 96"W x 96"H
WORK AREA	111 sq. ft.
MECHANICAL ROOM AREA	25.3 sq. ft.
BASE BOX WEIGHT	MAX GROSS
4,500 lbs.	15,000 lbs.

EXPANDABLE ISU® [E ISU®] WORKSHOP



FEATURES

- 110-120VAC/60Hz/60A Single Phase 120/208 GFI Circuit Breakers for externally powered devices
- (2) expandable awnings
- See page 41 for more details regarding the E ISU® base container



DIMENSIONS		
EXTERIOR STOWED	88"W x 108"L x 91.47"H	
EXTERIOR DEPLOYED	245.20"W x 108"L x 91.47"H	
WEIGHT	PAYLOAD	MAX GROSS
4,600 lbs.	5,300 lbs.	10,000 lbs.

ISU® 90 FC WORKSHOP



FEATURES

- 110V electrical system with duplex outlets and LED lights
- (2) expandable awnings
- (16) 463L tie-down points
- Shown is the ISU® 90 FC 4-Door kitted with optional Vidmar cabinets, short ramp, small generator, air compressor, and two Vidmar work benches on castors. Workshop is customizable to meet your requirements
- Check page 33 for more details regarding the ISU® 90 Full Cube



DIMENSIONS		
EXTERIOR	108"W x 88"L x 91.35"H	
INTERIOR	400 cu.ft.	
WEIGHT	PAYLOAD CAPACITY	MAX GROSS WEIGHT
1,700 lbs.	10,000 lbs.	11,720 lbs.



AAR's Battery Mobility Shop Container (BMSC) is a lightweight, quickly deployable, environmentally controlled workspace for the storage, maintenance, and recharging of batteries while out in the field.

FEATURES

- BMSC is integrated inside our non-expandable Mobility Shop Container (see page 54 for more details)
- Comes standard with the following:
 - (1) Vapor alarm
 - (2) Battery Charging Stations
 - (2) Battery Racks with 12 Battery Locations
 - (1) Work Bench
 - (2) Stanley Vidmar Bookcases
 - (1) Safety Kit with 5 lb. Fire Extinguisher
 - (1) Commercial ECU
 - (2) LED 24VDC Lights with Blackout
 - (1) 270 CFM Fans/Cross Ventilation
 - (1) Acid & Corrosive Safety Cabinet
 - Painted walls, ceiling, & floors



DIMENSIONS	
EXTERIOR	240"L x 96"W x 96"H
INTERIOR	111 sq. ft.
MECHANICAL ROOM AREA	25.3 sq. ft.



FEATURES

- Battery servicing station capable of:
 - Servicing a max of twenty-four (24) conventional, maintenance-free or gel lead-acid batteries at once,
 - Trickle charge, quick charge, deep cycle, automatic maintenance of trickle charge (after full charge is achieved), and diagnostic function
 - Showing the measurement for each battery & hand-held tools to operate the station with inclusion of ammeters and voltmeters
- Recharging trays for maximum of 24 standard, heavy-duty, 12-volt, military batteries and Storage trays for maximum of 24 batteries awaiting service or already serviced
- Eight (8) Xantrex™ TRUECHARGE2™ Battery Chargers
- Work benches & fixtures arranged along both sides of ISO
- 120/208V, 3PH, 5-Wire electrical system and grounding rod kit
- Safety & emergency system; Fluorescent lighting package & emergency lighting
- Water pump, water sink, ANSI-certified drench shower and emergency eyewash station, waste water pump, and waste water tank
- See page 50 for more details on our 20-foot ISO shelter

DIMENSIONS		
EXTERIOR	240"L x 96"W x 96.5"H	
INTERIOR	135"L x 65.88"W x 74"H	
WEIGHT	PAYLOAD CAPACITY	MAX GROSS WEIGHT
9,460 lbs.	43,450 lbs.	52,910 lbs.



The DSESTS is used to test and trouble-shoot electrical systems on USMC's M1 Abrams tanks.

FEATURES

- The 3-to-1 MECC 20-ft. ISO shelter is self-contained with a generator, ECU, and dehumidifier (see page 52 for MECC shelter details)
- Test equipment stays in place during transportation with specialty tie-down straps for fast deployment
- Shock absorbing communication shelves
- Modular storage cabinets with movable dividers
- M-16 and M-4 rifle racks
- Nitrogen bottle storage
- Anti-static material on work surface for soldier and equipment safety
- Two people can deploy or pack up within 15 min. due to expanding wing wall design



DIMENSIONS	
EXTERIOR STOWED	96"W x 240"L x 96"H
EXTERIOR DEPLOYED	264"W x 240"L x 96"H
INTERIOR STOWED	160 sq. ft.
INTERIOR DEPLOYED	400 sq. ft.
TARE WEIGHT	MAX GROSS
9,000 lbs.	24,000 lbs.



FEATURES

- H.D. Tire Mounter and Demounter
- Run Flat Horizontal Press
- Tire Inflation Cage
- O.H. Crane (1/2 ton) with Electric Winch; Jib Crane (1/2 ton) with Electric Winch
- Air Compressor 5HP with 20-Gallon Tank
- 60-Gallon Air Storage Tank
- Compressed Air Outlets/Inlets
- Two 13,700 BTU Environmental Control Units (ECU)
- Four ECU Ports
- Work Bench; Tire Maintenance Tool Box
- Large Tool Chest Roller Cabinet; Small Tool Chest Roller Cabinet
- Safety Board; Two ABC 10 lb. Fire Extinguishers
- Four Soft Doors
- One Cargo Ramp - Soft Door
- Personnel Door with Window
- Double Door with Cam locks; Three Double Door Cargo Ramps
- Sunshade Assembly
- Operations Control Panel
- Generator 14.9kW

DIMENSIONS	
EXTERIOR STOWED	96"W x 240"L x 96"H
EXTERIOR DEPLOYED	264"W x 240"L x 96"H
INTERIOR STOWED	160 sq.ft.
INTERIOR DEPLOYED	400 sq.ft.



AAR Mobility Systems' shelters can be configured to secure and protect weapons and other assets. With gun racks, security alarms, dehumidification systems, armor plates, and other security features, our shelters are the perfect system to transport and maintain valuable items.

WEAPONS AND SECURITY

ISU® 90 KCI DOG KENNEL



FEATURES

- ISU® 90 KCI One-Dog Kennel and ISU® 90 KCI Three-Dog Kennel available (see page 36 for more details on the ISU® 90 KCI)
- Four doors, two tall doors on one 108" side, two short doors on other 108" side
- Two flip-up storage doors above short doors
- Dog doors installed on each kennel door
- Kennel access door with open bar gate for each animal
- Dog runs include fencing free of pinch points and sharp corners, fencing roof swings back to allow easy access, shields between runs, and sloped decking allowing for easy cleaning
- Storage quadrant for supplies along with eight additional shelves
- Two hazmat doors for equipment loading and inspection
- Dog doors are vertical 2-way swinging with locking capability installed on each kennel door
- Environmental Control System keeps dogs comfortable



DIMENSIONS		
EXTERIOR	108"W x 88"L x 91.35"H	
WEIGHT	PAYLOAD	MAX GROSS
2,300 lbs.	9,240 lbs.	11,540 lbs.

ISU® 90I HIGH SECURITY CONTAINER



FEATURES

- NIJ 0108.00 Level IIIA Ballistic protection
- Armor plate exterior, forced entry resistant
- Single outside armor plate door with high security hasp and padlock
- Steel interior dutch door with pass through for issue of weapons or secured items
- Nominal 36" x 84" main and dutch doors
- Two 30" fluorescent light fixtures, three bulbs each
- Power distribution system
- 240 VAC single phase power unit
- Interior mounted load center with 4 branch circuits
- Surge protection on service entrance
- Interior duplex outlets
- Dehumidification system to control humidity
- Security alarm system
- Interior tie-down rings

DIMENSIONS		
EXTERIOR	108"W x 88"L x 91.35"H	
INTERIOR	373 sq.ft.	
WEIGHT	PAYLOAD CAPACITY	MAX GROSS WEIGHT
6,035 lbs.	5,965 lbs.	12,000 lbs.



FEATURES

- All weapon racks are factory installed in the ISU® 90EO container (see page 34 for more information on the base container)
- Door may be double padlocked (user provides)
- Each weapons rack can also be padlocked with easy access to each weapon when stored
- A factory installed dehumidifier is available (P/N 60398-008) and is recommended for weapons storage
- Designed without center wall to accommodate various weapons room configurations
- Weapons rooms are configurable to meet your requirements based on quantity and type of weapon



DIMENSIONS		
EXTERIOR	88"W x 108"L x 91.35"H	
INTERIOR	400 sq.ft.	
WEIGHT	PAYLOAD CAPACITY	MAX GROSS WEIGHT
1,510 lbs.	5,000 lbs.	6,510 lbs.



FEATURES

- Small Arms Maintenance shelter integrated inside HELAMS (see page 48 for more details regarding the HELAMS shelter)
- One removable winch assembly per side to lower the side wall assembly
- Four main leveling jacks and six side leveling jacks
- 12V/24V Mobility wheel set adapter provision
- Electrical Integration
 - 120/208 VAC, 3-PH-Y, 60A, 60Hz Power Input
 - 120/208 VAC, 3-PH-Y, 60A, 60Hz Power Output
 - (8) LED Lights with Lighting Control Module
 - Multiple 120 VAC Outlets
- 16" ECU duct supply and return ports; Desiccant dehumidifier
- Alarm system & CDX-10 high security dead bolt lock
- HazMat cabinet 17.5" x 18" x 22.5"
- 90"L x 30"W x 42"H Tool box with casters capable of holding (64) SIG
- Weapons racks capable of storing the following:
 - (132) M16/M4
 - (32) M870
 - (12) M2HB
 - (18) M240



DIMENSIONS		
EXTERIOR STOWED	96"W x 178"L x 96.25"H	
INTERIOR STOWED	79.7"W x 174.3"L x 87"H	
EXTERIOR DEPLOYED	258"W x 178"L x 96.25"H	
INTERIOR DEPLOYED	256"W x 174.3"L x 87"H	
WEIGHT	PAYLOAD	MAX GROSS WEIGHT
6,445 lbs.	9,210 lbs.	15,000 lbs.

AAR Integrated Technologies

AAR's Integrated Technologies business unit provides on-time and on-budget design, development and delivery of integrated solutions with worldwide product sustainment and technical support.

SOLUTION DEVELOPMENT AND INTEGRATION: Our engineering and design expertise facilitates rapid prototyping, testing, manufacturing, installation and integration of ground-based C4ISR systems utilizing combat proven systems and commercial off-the-shelf hardware and software. Our C4ISR Systems are designed for rapid deployment. They provide advanced tactical workplaces, digital communications, SATCOM data links, sensor integration, and other electronics gear necessary to prepare, monitor, and execute battle plans.

CAPABILITIES

- C4I system design & integration
 - Design and manufacture of modular C4ISR systems & specialty hardware
 - Installation and integration of C4I systems into tactical vehicles and mobile shelter
 - C4I system and vehicle upgrades (reset/refresh)
- Fixed and mobile command and operation centers
- Technical data and documentation development/revision
- Product manufacturing and fabrication of custom shelters, C2 Systems, and all associated infrastructure
- Within 5 miles of World Class test facilities
- Radio interoperability systems
- Ruggedized modules
- Battle info management and display
- Competitive build-to-print rates
- Mobile integration capabilities

SOLUTIONS (FIXED AND MOBILE)

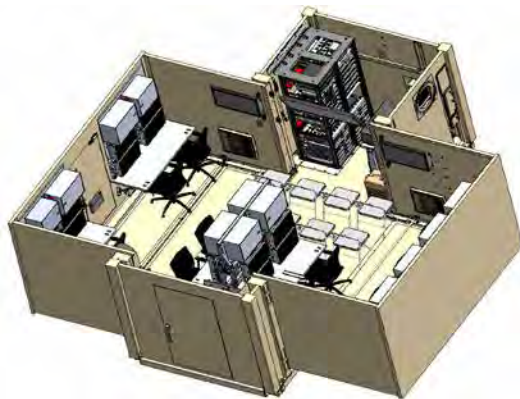
- TOCs, CPs & Emergency Response Centers
- C4ISR Mobile/Transit Case Products
- Fly Away Transit Case C4I Systems
- Modular rack systems
- SATCOM Terminals
- Trailer and shelter mounted systems
- Custom combat vehicle solutions
- COMMS/Network/Firewalls
- RF data networks and encryption
- Sensor integrated networks and work stations
- Expanded tactical networks
 - Truck Mounted
 - Transit Case
 - C4I Trainer
 - C4I Lab



SOLUTION, SUSTAINMENT AND SUPPORT

Our representatives provide life-cycle support for InTech solutions and other DoD fielded systems. From training, to repairs and servicing both in-garrison and while deployed we are a proven and reliable partner for DoD for around-the-globe support to their critical mission.

- Mobile maintenance and system installation teams with security clearances
- System modification
- Maintenance, repair, and reset
- Field/depot repair
- Circuit card repair
- Corrosion repair/prevention
- LRU repair/refurbishment
- Hands-On Training
- CONUS and OCONUS operational support
- System integration (HW & SW) using the latest technologies
- Ramp up & ramp down on-site & off-site services
- Technical Service Teams and Support Services
- Rapid Response
- Support specialized command and control system requirements
- Prototype & production shop
- Operations center support services
- QA & Test
- Assemblers and installers
- On-site cable shop
- Integrators



3D Model of Integration



Before Integration



After Integration

PROVEN PERFORMANCE AND CERTIFICATIONS

InTech provides Contractor Logistics Support (CLS) for the sustainment of the AN/MSN-7 Communication Central System, also known as the Tower Restoral Vehicle (TRV). The AN/MSN-7 is a mobile air traffic control tower used for control of aircraft during taxi, takeoff and landing on and around airfields. The AN/MSN-7 operates as a self-contained system, with a primary vehicle that contains all electronic equipment required for operations and a support vehicle that provides all necessary operating power requirements. Our past performance on this contract was successful. Not only do we overhaul the systems, we perform mobile depot maintenance in the field, provide 24/7 helpdesk support, provide logistics support/sustainment and are integrating new monitor control panels for the customer. This program has elements of all our major competencies.



Containers

AAR Mobility Systems is the **World Leader** in manufacturing air transportable containers. As the sole manufacturer of the ISU® Container, AAR's design specifications meet or exceed Department of Defense standards for air transportation of equipment and supplies.

With over **40 different configurations** available, our containers can easily be customized for any mission requirement such as armories, laundries, refrigeration, dog kennels, gun rooms, maintenance, ATV storage, and more. Our complete collection of containers offers a wide range of deployment capabilities, including land transport, sealift, or airlift by any configuration of cargo aircraft in the world.

Our third generation 56000 Series ISU® Container, also known as the Gen X Container, is the **mainstay for military rapid deployment forces**. It is adaptable to unique user requirements and can serve virtually any cargo deployment need. Our ISU® Containers improve mobilization capability for operational units by providing:

- Faster load and off load times
- Immediate operational workspace
- Reduced deployment footprint
- Secure equipment in transit
- Instant access to parts
- Equipped to lock in 463L aircraft cargo restraint systems
- No pallet or tie-down chains required

AAR ISU® Containers - The Key to Rapid Deployment

FIXED-WING TRANSPORTABILITY

Most of AAR's ISU[®] Containers have been certified by the U.S. Department of Air Force for Air Transportability Dated 7-Mar-2000. Certification of Air Transport of the AAR Mobility Systems' 12,000 pound gross weight container was signed by ASC/ENFC Aerial Delivery Group. Some are Air-Certifiable and have been tested and certified internally by AAR.

EXTERNAL AIR TRANSPORTABILITY

The U.S. Army Soldier Systems Center (Natick) has certified the ISU[®] 90 and the ISU[®] 60 Containers for Helicopter Sling Load (HSL). The rigging procedures are available to all services through the Publication Multiservice Helicopter Sling Load.

The series of three manuals provide detailed procedures for HSL:

- Basic Operations and Equipment
- Single-Point Rigging Procedures
- Dual-Point Load Rigging Procedures

The FM 10-450-5 (Dual-Point Rigging Procedures) provides rigging procedures for lifting two (2) ISU[®] 90's lashed together to form a tandem load.

The remaining AAR containers have been helicopter sling tested internally by AAR (Helicopter Sling Certifiable). However, official certification must come from U.S. Army Soldier Systems Center, Natick, MA, at the request of the user.

HAZARDOUS MATERIAL ACCESS

Air Force Joint Service Manual 24-204, Chapter 11, Attachment 21, replaces AFM71-4 and states the following: "If a container can be accessed in flight, i.e., use of hazardous material panel, it is permissible to airlift hazardous material in an ISU[®] Container."

For more information, please reference your appropriate Service Manual:

- AFJSM24-204 U.S. Air Force
- TM38-250 U.S. Army
- DODINST 6050.5 U.S. Navy
- MCOP4030.19.F U.S. Marine Corps
- DLA AM4145.3 For other DoD users



Certified for Helo-Lift Operations (where noted on each page)



Certifiable for Helo-Lift Operations (where noted on each page) - meaning internally certified by AAR, but official certification must come from U.S. Army Soldier Systems Center, Natick, MA, at the request of the user.

FIXED-WING TRANSPORTABILITY



EXTERNAL AIR TRANSPORTABILITY



Certified for Airlift Operations (roll-in and lock). No auxiliary equipment/tie-downs are required (where noted on each page).



Certifiable for Airlift Operations (where noted on each page) - meaning internally certified by AAR, but official certification must come at the request of the user.



HAZARDOUS MATERIAL ACCESS PANEL





FEATURES

- Four-way forkliftable
- Intermodal - transportable by air, land, sea or rail
- Stackable two-high when loaded with up to 10,000 lbs. or empty
- Compatible with standard military transport vehicles/equipment 2.5-ton and 5-ton - FMTV, LMTV, HEMTT, Flatrack, CROP, etc.
- Base pre-drilled for optional caster set
- Ready for use with low or high-speed mobility wheel set
- All aluminum extruded, mechanically fastened pallet base certified not to damage aircraft roller systems
- Winching rings located at every lower corner

ISU® CONTAINER COLORS

Standard ISU® Container colors are green, tan or black; optional colors are grey, orange, or white (colors are designated by the third digit in the part number. Additional colors, including camo, may be requested through our sales team.

ISU® KITS

There are over 800 kit configurations (including weapons rooms and storage solutions) available to choose from. The last 3 digits of the part number pertains to the kit.

Standard Colors	GREEN	P/N 56100-000	FED-STD 34094
	TAN	P/N 56200-000	FED-STD 33446
	BLACK	P/N 56300-000	FED-STD 37030
Optional Colors	GREY	P/N 56400-000	FED-STD 36300
	ORANGE	P/N 56500-000	FED-STD 12197
	WHITE	P/N 56600-000	FED-STD 37875

ISU® 90 4-DOOR



Four doors, two doors on each 108" side

P/N	NSN	COLOR	GSA	DLA
56102-000	8145-01-465-3621	GREEN	•	•
56202-000	8145-01-465-4187	TAN	•	•
56302-000	8145-01-465-4581	BLACK	•	•
56402-000	8145-01-465-4816	GRAY	•	
56602-000	8145-01-465-5052	WHITE	•	
DIMENSIONS				
EXTERIOR	108"W x 88"L x 91.35"H			
INTERIOR	400 cu.ft.			
WEIGHT	PAYLOAD CAPACITY	MAX GROSS WEIGHT		
1,720 lbs.	10,000 lbs.	11,720 lbs.		

ISU® 90 FULL CUBE



- Four doors - two doors on each 108" side
- Allows for storage and transport of larger items in full 100.25" x 80.25" foot print

P/N	NSN	COLOR	GSA	DLA
56110-000		GREEN		
56210-000		TAN		
56310-000		BLACK		
DIMENSIONS				
EXTERIOR	108"W x 88"L x 91.35"H			
INTERIOR	400 cu.ft.			
WEIGHT	PAYLOAD CAPACITY	MAX GROSS WEIGHT		
1,700 lbs.	10,000 lbs.	11,700 lbs.		

ISU 90® END OPENER [EO]

In this variation, doors are on the 88" side, instead of the 108" side of the container.

DIMENSIONS

108"W x 88"L x 91.35"H
400 cu. ft.



ISU® 90EO 4-DOOR



WEIGHT 1,630 lbs.
PAYLOAD 10,000 lbs.
MAX GROSS 11,630 lbs.

Two doors on both 88" sides

P/N	NSN	COLOR	GSA	DLA
56145-000	8145-01-465-4146	GREEN	•	•
56245-000	8145-01-465-4270	TAN	•	•
56345-000	8145-01-465-4803	BLACK	•	•

ISU® 90EO 2-DOOR



WEIGHT 1,445 lbs.
PAYLOAD 5,000 lbs.
MAX GROSS 6,445 lbs.

Two doors on one 88" side

P/N	NSN	COLOR	GSA	DLA
56136-000	8145-01-510-4442	GREEN	•	•
56236-000		TAN	•	

ISU® 90EO WRSK 3-DOOR

WHEEL RESTRAINT SECURITY KIT



WEIGHT 1,610 lbs.
PAYLOAD 10,000 lbs.
MAX GROSS 11,610 lbs.

One door on one 88" side, two on other

P/N	NSN	COLOR	GSA	DLA
56115-000	8145-01-465-3682	GREEN	•	•
56215-000	8145-01-465-4197	TAN	•	•

ISU® 90EO 1-DOOR



WEIGHT 1,510 lbs.
PAYLOAD 5,000 lbs.
MAX GROSS 6,510 lbs.

- One door on one 88" with dual lock rods
- Designed without center wall to accommodate a weapons room

P/N	NSN	COLOR	GSA	DLA
56121-000	8145-01-465-3729	GREEN	•	•
56221-000	8145-01-465-4201	TAN	•	•

ISU® 90EO 2-DOOR



WEIGHT 1,630 lbs.
PAYLOAD 10 000 lbs.
MAX GROSS 11,630 lbs.

- 2 doors, 1 on each 88" side with dual lock rods
- Common usage is four (4) C-5 main gear tires on each side or four C-17 nose gear tires (or configurable to meet mission requirements)

P/N	NSN	COLOR	GSA	DLA
56129-000	8145-01-465-4139	GREEN	•	•
56229-000	8145-01-465-4204	TAN	•	•
56329-000	8145-01-465-4800	BLACK	•	

ISU 90® I

The ISU® 90 I has a built-in aisleway for fore and aft access on C-130 at compartments G through I. These containers can be used on other aircrafts as well.



AISLEWAY



ISU® 90I 4-DOOR



WEIGHT
1,700 lbs.
PAYLOAD
10,000 lbs.
MAX GROSS
11,700 lbs.

DIMENSIONS

108"W x 88"L x 91.35"H
385 cu. ft.

- Four doors - two doors on each 108" side
- Also available in a Full Cube version without center wall

P/N	NSN	COLOR	GSA	DLA
56116-000	8145-01-465-3685	GREEN	•	•
56216-000	8145-01-465-4199	TAN	•	•
56316-000	8145-01-465-4788	BLACK	•	•
56416-000	8145-01-465-4850	GRAY	•	•
56616-000	8145-01-465-5063	WHITE	•	

ISU® 90I WRSK 4-DOOR

WAR READINESS SPARE KIT



WEIGHT
1,700 lbs.
PAYLOAD
10,000 lbs.
MAX GROSS
11,700 lbs.

DIMENSIONS

108"W x 88"L x 91.35"H
385 cu. ft.

Four doors, one wide door (45") and one narrow door (39") on each 108" end

P/N	NSN	COLOR	GSA	DLA
56175-000	8145-01-564-8057	GREEN	•	
56275-000	8145-01-564-8056	TAN	•	

ISU® 90IE0 1-DOOR



WEIGHT
1,500 lbs.
PAYLOAD
5,000 lbs.
MAX GROSS
6,500 lbs.

DIMENSIONS

88"W x 108"L x 91.35"H
385 cu. ft.

- One door on one 88" side
- Door has dual lock rods
- Fully configurable interior
- Commonly used as a weapons rooms

P/N	NSN	COLOR	GSA	DLA
56166-000		GREEN	•	
56266-000		TAN	•	

ISU® 90IE0 WRSK 3-DOOR

WHEEL RESTRAINT SECURITY KIT



WEIGHT
1,700 lbs.
PAYLOAD
10,000 lbs.
MAX GROSS
11,700 lbs.

DIMENSIONS

88"W x 108"L x 91.35"H
385 cu. ft.

- Three doors; one door on one 88" side w/ permanent shelf, two doors on opposite 88" side w/ adjustable shelf
- C-130 wheel well access aisle on 88" end
- Container holds four (4) C-130 main gear tires

P/N	NSN	COLOR	GSA	DLA
56176-000	8145-01-465-4164	GREEN	•	•
56276-000	8145-01-465-4569	TAN	•	
56376-000	8145-01-465-4810	BLACK	•	•
56476-000	8145-01-465-4887	GRAY	•	

ISU® KC

The ISU® KCs are designed with a sloped edge for compatibility with the fuselage contours of specific aircrafts.

**ISU® 90KC 4-DOOR**

WEIGHT
1,560 lbs.
PAYLOAD
10,000 lbs.
MAX GROSS
11,560 lbs.

DIMENSIONS

108"W x 88"L x 91.35"H
381 cu. ft.

- Four doors - two tall doors on one 108" side, two short doors on other 108" side
- Two flip-up storage doors & two shelves above short doors

P/N	NSN	COLOR	GSA	DLA
56120-000	8145-01-465-3687	GREEN	•	•
56220-000	8145-01-465-4200	TAN	•	•

ISU® 70KC 4-DOOR

WEIGHT
1,360 lbs.
PAYLOAD
10,000 lbs.
MAX GROSS
11,360 lbs.

DIMENSIONS

108"W x 88"L x 69"H
289 cu. ft.

- Four doors, two tall doors on one 108" side, two short doors on other 108" side
- Two flip-up storage doors & two shelves above short doors

P/N	NSN	COLOR	GSA	DLA
56150-000	8145-01-465-4160	GREEN	•	•
56250-000	8145-01-465-4565	TAN	•	•
56350-000	8145-01-465-4805	BLACK	•	•
56450-000	8145-01-465-4884	GRAY	•	•

ISU® 90KCI 4-DOOR

WEIGHT
1,540 lbs.
PAYLOAD
10,000 lbs.
MAX GROSS
11,540 lbs.

DIMENSIONS

108"W x 88"L x 91.35"H
358 cu. ft.

- Four Doors - two tall doors on one 108" side, two short doors on other 108" side
- Two flip-up storage doors & two shelves above short doors; Equipped with aisleway

P/N	NSN	COLOR	GSA	DLA
56133-000	8145-01-465-4140	GREEN	•	•
56233-000	8145-01-465-4239	TAN	•	•
56433-000	8145-01-465-4855	GRAY	•	

ISU® 70KCA 4-DOOR

WEIGHT
1,310 lbs.
PAYLOAD
10,000 lbs.
MAX GROSS
11,310 lbs.

DIMENSIONS

108"W x 88"L x 69"H
253 cu. ft.

- Four doors, two tall doors on one 108" side, two short doors on other 108" side
- Two flip-up storage doors above short doors
- Two shelves under upper doors

P/N	NSN	COLOR	GSA	DLA
56188-000	8145-01-478-9990	GREEN	•	•
56288-000	8145-01-478-9992	TAN	•	•

VARIOUS HEIGHTS

These ISU®s are various heights to fit your mission.

- Various heights to fit different aircrafts
- Full or half size pallet base

ISU® 60 4-DOOR



WEIGHT
1,300 lbs.
PAYLOAD
10,000 lbs.
MAX GROSS
11,300 lbs.

DIMENSIONS

108"W x 88"L x 60"H
284 cu. ft.



- Four doors, two on each 108" side
- Designed for helicopter usage
- Can store additional cargo on top with use of optional cargo nets

P/N	NSN	COLOR	GSA	DLA
56103-000	8145-01-465-3629	GREEN	•	•
56250-000	8145-01-465-4194	TAN	•	•
56303-000	8145-01-465-4582	BLACK	•	•
56603-000	8145-01-465-5054	WHITE	•	•

ISU® 72.5 2-DOOR



WEIGHT
910 lbs.
PAYLOAD
5,000 lbs.
MAX GROSS
5,910 lbs.

DIMENSIONS

108"W x 48"L x 72"H
155 cu. ft.



- Two doors, both on one 108" side
- Approximately half-pallet size
- 2-way forkliftable

P/N	NSN	COLOR	GSA	DLA
56104-000	8145-01-316-3294	GREEN	•	•
56204-000		TAN	•	

ISU® 60.5 2-DOOR



WEIGHT
835 lbs.
PAYLOAD
5,000 lbs.
MAX GROSS
5,835 lbs.

DIMENSIONS

108"W x 48"L x 60"H
130 cu. ft.



- Two doors, both on one 108" side
- Approximately half-pallet size
- 2-way forkliftable

P/N	NSN	COLOR	GSA	DLA
56112-000	8145-01-316-3292	GREEN	•	
56212-000		TAN	•	
56312-000		BLACK	•	

ISU® 60EO 4-DOOR



WEIGHT
1,260 lbs.
PAYLOAD
10,000 lbs.
MAX GROSS
11,260 lbs.

DIMENSIONS

88"W x 108"L x 60"H
248 cu. ft.



- Four doors, two on each 88" side
- Can store additional cargo on top with use of optional cargo nets

P/N	NSN	COLOR	GSA	DLA
56109-000	8145-01-465-3677	GREEN	•	•
56209-000	8145-01-465-4195	TAN	•	•

ISU® 80 4-DOOR



WEIGHT
1,570 lbs.
PAYLOAD
10,000 lbs.
MAX GROSS
11,570 lbs.

DIMENSIONS

108"W x 88"L x 88"H
355 cu. ft.



- Four doors, two on each 108" side
- Designed to fit inside an 8-ft. high ISO container

P/N	NSN	COLOR	GSA	DLA
56180-000	8145-01-501-0843	GREEN	•	•
56280-000	8145-01-486-0142	TAN	•	•

ISU® 50.5 4-DOOR WITH MOBILITY KIT



WEIGHT
1,150 lbs.
PAYLOAD
4,000 lbs.
MAX GROSS
5,150 lbs.

DIMENSIONS
108"W x 48"L x 50"H
193 cu. ft.

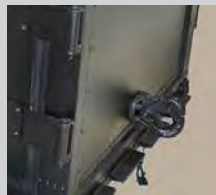


- Four doors, two on each 108" side
- Interior of container is free of divider
- Casters, tow bar, and pintle come standard as part of mobility kit
- Specially designed dividers, shelves, cabinets, drawers and trays are available as kits upon request
- Stackable 2-High when loaded with up to 4,000 lbs. Center post can be quickly removed (without shelves installed) to enable loading of large items

Closeup of airlift ring and towbar



Closeup of casters



Closeup of pintle

P/N	NSN	COLOR	GSA	DLA
56117-000		GREEN		
56217-000		TAN		
56317-000		BLACK		

ATV

These ISU®s are designed to be used for hauling ATV's and cargo.

ISU® 96ATV 4-DOOR



WEIGHT
2,180 lbs.
PAYLOAD
7,820 lbs.
MAX GROSS
10,000 lbs.

DIMENSIONS
108" W x 88" L x 96" H
418 cu. ft.



- Four doors - two on each 108" side
- Designed for military squad requirement
- Room for two small ATV's*, two small trailers for hauling cargo, fuel, and equipment
- Optimized for maximum cargo flexibility
- Includes 72" support shelf and ATV ramp
- Shelf has 6-point shelf support
- All aluminum extruded, mechanically fastened pallet base - certified not to damage roller system
- Weather, dust and sand proof
- Four-way forkliftable with oversized forklift tubes (13.75" x 4.4")

P/N	NSN	COLOR	GSA	DLA
56179-000	8145-01-465-4180	GREEN	•	
56279-000	8145-01-465-4572	TAN	•	

ISU® 65I ATV 4-DOOR



WEIGHT
1,450 lbs.
PAYLOAD
8,550 lbs.
MAX GROSS
10,000 lbs.

DIMENSIONS
108" W x 88" L x 65" H
357 cu. ft.



- Four doors - two on each 108" side
- Room for one small ATV,* one small trailer for hauling cargo, fuel, and equipment
- An additional 1,500 lbs. of cargo can be stored on top, covered by a standard 463L top net (not supplied)
- 6" aisleway meets C-130 safety of flight requirements
- Multiple HAZMAT doors for cargo inspection and access
- All aluminum extruded, mechanically fastened pallet base - certified not to damage roller system
- Weather, dust and sand proof
- Four-way forkliftable with oversized forklift tubes (13.75" x 4.4")

P/N	NSN	COLOR	GSA	DLA
56194-000	8145-01-511-3250	GREEN	•	
56294-000		TAN	•	

REFRIGERATED CONTAINERS

- Construction: FRP skinned composite panels mounted on an aluminum pallet base
- Pallet base includes forklift pockets and 463L compatible cargo rails on all four sides
- C-130 wheel well access aisle on 88" end
- Montreal Protocol approved refrigerants (R-404A)
- Helo-sling lift and tie-down rings attached to four top corners of container

ISU® 96RC REFRIGERATED



DIMENSIONS
88"W x 108"L x 97"H
260 cu. ft.

WEIGHT
3,250 lbs.
PAYLOAD
6,750 lbs.
MAX GROSS
10,000 lbs.



- One door on 88" side - door is 49.5" wide with 46.88" opening
- Air transport certifiable self-contained refrigerated container for storage of temperature sensitive and perishable items
- Diesel or electric refrigerated systems allows container to maintain temperature even while in transport
- Temperature range: -22° F to +86° F
- Temperature data recorder with dual thermal seals
- Operates on integral diesel refrigeration unit or 208/230-volt three phase power
- Designed to meet FDA requirements
- Start/stop operation to maintain temperature and conserve fuel

P/N	NSN	COLOR	GSA	DLA
50148-001	8145-01-325-2243	GREEN	•	•
50148-006	8145-01-422-9084	TAN	•	•
50148-008	8145-01-422-9080	WHITE	•	•

ADVANCED DESIGN REFRIGERATOR 300 [ADR 300]



DIMENSIONS
Exterior: 88"W x 108"L x 96"H
with airlift rails
Interior: 84.8"W x 104.5"L x 96"H
without airlift rails
281 cu.ft.

WEIGHT
3,285 lbs.
PAYLOAD
6,715 lbs.
MAX GROSS
10,000 lbs.



- One door on 88" side
- Maintains interior temperatures as low as 0° F in an outside ambient temperature of 125° F
- Refrigeration Unit (RU) mounted in one 108" side wall panel and includes power entry and control components
- Container Heat Leak conductance value is 20 BTU/hr/°F
- Operates on 230 Volt 3 Phase 60 Hz (can be manufactured to 380 Volt 3 Wye 50 Hz for Europe)
- Drip-edge deflects water run-off from the open door
- Tie-down provisions passed MIL-STD-209J requirements

P/N	NSN	COLOR	GSA	DLA
56149-000	4110-01-465-4158	GREEN	•	
56249-000	4110-01-465-4564	TAN	•	

E ISU®

The E ISU® is a 3-in-1 Expandable version of the ISU® 90 Container.



DIMENSIONS
Exterior Stowed
 88"W x 108"L x 91.47"H
Interior Stowed
 399 cu. ft.



WEIGHT
 2,500 lbs.
PAYLOAD
 7,500 lbs.
MAX GROSS
 10,000 lbs.

DIMENSIONS
Exterior Deployed
 245.20"W x 108"L x 91.47"H
Interior Deployed
 Ceiling Height: min. 72.5", max 85", Floor: 159 sq.ft.

- Occupies one pallet position (88" x 108") when stowed
- Using two personnel, the container can be deployed in less than 15 minutes
- Integral 463L air cargo pallet base - loads directly into aircraft cargo restraint system, as do all of AAR's ISU® containers
- Four-way forkliftable
- Two electrical shore-power hook up and interior 4-gang 120V receptacles
- Non-insulated fabric walls
- Two scissor-jacks on each side for wing-wall support

P/N	INCLUDES	COLOR	GSA	DLA
56140-000	Two Soft Canvas Doors & Center Divider	GREEN	•	
56240-000		TAN	•	
56141-000	Two Soft Canvas Doors & One Personnel Door	GREEN	•	
56241-000		TAN	•	
56142-000	Two Soft Canvas Doors & Two Personnel Doors	GREEN	•	
56242-000		TAN	•	
56241-714	EISU 90EO 1 Door w/Kit 714 - Bear Kitchen NSN: 8145-01-525-1991	TAN	•	•

ISU® ACCESSORIES



AAR Mobility Systems has a comprehensive line of accessories available to enhance our ISU® containers:

- Optimize storage capabilities with **Dividers, Brackets, Tie-Down Strap Assemblies, Tire Racks, Small Parts Cabinets, Tie-Down Rings, Shelves, and Storage Trays** [trays and shelves pictured left]
- Repair and restore ISU® containers with **Door Seals, Door Assemblies, and Repair Kits**
- Enhance mobilization capabilities with **Mobility Caster Sets, Tow Bars, and M720/832 Mobilizer Adapters**
- Secure and organize weapons during transport with specialized **Weapons Racks**
- Improve storage and stacking of KC-Series Containers with **KC Stacking Racks**
- Protect container bottoms from damage with **ISU® storage Skid Kit**
- Access hazardous material in flight with a **Hazmat Access Panel**
- Create two-high structure modules with our **ISU® Mezzanine Systems**
- Reduce humidity with our custom **Dehumidification Units**



ISU® Repair Kit



Hazmat Access Panel



Mobility Caster Sets



Weapons Racks



Cargo Nets



Small Parts Cabinets

For part numbers or more information, please call 800-355-2015 or email mobility.systems@aarcorp.com



Shelters

AAR Mobility Systems manufactures a variety of shelters for military operations and humanitarian efforts. Our complete line of intermodal shelter systems is designed with maximum flexibility to comply with end-user requirements, provide ease of set-up, and meet long lifespan requirements with rugged construction.

Our shelter systems improve mobilization capabilities for operational units by providing:

- Patented integral loading base for rapid aircraft load and off load times
- Immediate operational workspace
- Reduced deployment footprint
- Secure equipment in transit

Numerous configurations are available to suit any mission, including tactical operations centers, briefing rooms, ablution units, laundry facilities, kitchens, supply and part storage, sleeping quarters, water treatment and storage, tire maintenance facilities, and more.

A full range of integrated services, spare parts and field service support is available to sustain our shelters.

AAR Mobility Systems continues to expand and improve our shelter product lines to meet the ever-changing deployment requirements of military, peacekeeping, and disaster relief forces worldwide.

Shelter Comparisons

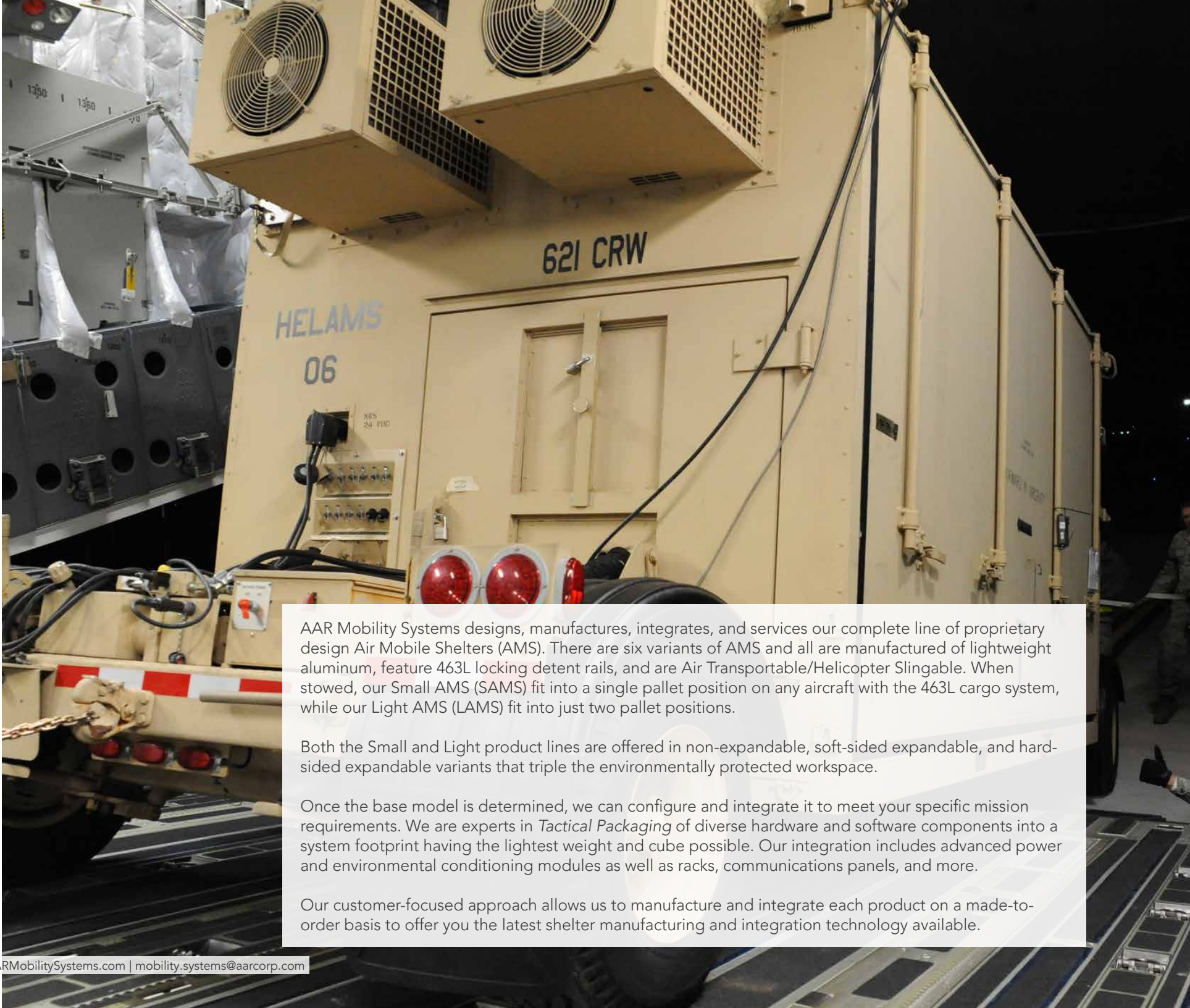
NON-EXPANDABLE

SOFT EXPANDABLE

HARD EXPANDABLE

<p>Single Pallet [AMS]</p>	<p>SAMS</p>		<p>ESAMS</p>		<p>HESAMS</p>	
<p>Double Pallet [AMS]</p>	<p>LAMS</p>		<p>ELAMS</p>		<p>HELAMS</p>	
<p>ISO</p>	<p>TFI</p>		<p>MECC</p>		<p>TFI</p>	
<p>Truck [VMS]</p>	<p>LMS</p>		<p>EMSC</p>		<p>EVAN</p>	

AIR MOBILE SHELTERS



AAR Mobility Systems designs, manufactures, integrates, and services our complete line of proprietary design Air Mobile Shelters (AMS). There are six variants of AMS and all are manufactured of lightweight aluminum, feature 463L locking detent rails, and are Air Transportable/Helicopter Slingable. When stowed, our Small AMS (SAMS) fit into a single pallet position on any aircraft with the 463L cargo system, while our Light AMS (LAMS) fit into just two pallet positions.

Both the Small and Light product lines are offered in non-expandable, soft-sided expandable, and hard-sided expandable variants that triple the environmentally protected workspace.

Once the base model is determined, we can configure and integrate it to meet your specific mission requirements. We are experts in *Tactical Packaging* of diverse hardware and software components into a system footprint having the lightest weight and cube possible. Our integration includes advanced power and environmental conditioning modules as well as racks, communications panels, and more.

Our customer-focused approach allows us to manufacture and integrate each product on a made-to-order basis to offer you the latest shelter manufacturing and integration technology available.

SMALL AIR MOBILE SHELTER [SAMS]



DIMENSIONS

Exterior

88"W x 108"L x 91.38"H or 96.25"H

Interior

80.6"W x 100.6"L x 81.65"H or 86.5"H

WEIGHT

3,000 lbs.

PAYLOAD

7,000 lbs.

MAX GROSS

10,000 lbs.



- Environmentally controlled shelter designed for multiple uses
- Sized for transport on most cargo aircraft
- Immediate ready-for-action status upon deployment
- Lightweight, clean, environmentally controlled space with a securable single-entry door
- Can be custom designed and equipped with shelves, racks, specialized lighting and dehumidification equipment
- Equipped with 208V/3PH/ 60A power distribution kit

P/N	NSN	COLOR	GSA	DLA
58100-001	8145-01-486-2409	GREEN	•	

EXPANDABLE SMALL AIR MOBILE SHELTER [ESAMS]



STOWED DIMENSIONS

Exterior

88"W x 108"L x 96.25"H

Interior

80.91"W x 100.6"L x 86.5"H

DEPLOYED DIMENSIONS

Exterior

260"W x 108"L x 96.25"H

Interior

252.5"W x 100.6"L x 86.5"H

WEIGHT

3,690 lbs.

PAYLOAD

6,950 lbs.

MAX GROSS

10,000 lbs.



- 3-in-1 soft-sided expandable
- Climate-controlled workspace
- All perimeter walls, ceiling, and floor are insulated
- Rigid walls of stowed container fold down to serve as floors in expanded mode
- Side rooms enclosed within durable fabric walls and ceiling and supported by struts
- Equipped with 208V/3PH/60A power distribution kit
- One person can deploy in less than 15 minutes

P/N	NSN	COLOR	GSA	DLA
58203-001 Single Door	8145-01-493-7449	GREEN	•	•
58203-002 Single Door		TAN	•	•
58203-007 Double Door		GREEN	•	•
58203-008 Double Door		TAN	•	•

HARDSIDE EXPANDABLE SMALL AIR MOBILE SHELTER [HESAMS]



STOWED DIMENSIONS

Exterior

88"W x 108"L x 96.25"H

Interior

68"W x 100.6"L x 86.5"H

DEPLOYED DIMENSIONS

Exterior

245.38"W x 108"L x 96.25"H

Interior

243"W x 95"L x 86.5"H

WEIGHT

4,755 lbs.

PAYLOAD

5,245 lbs.

MAX GROSS

10,000 lbs.



- Hardsided 3-in-1 expandable
- Climate-controlled workspace for a variety of missions
- Wing-walls fold down to serve as floors in expanded mode
- Side rooms enclosed within durable aluminum skin, foam and beam walls and ceiling
- Equipped with 208V/3PH/60A power distribution kit
- Two people can deploy in less than 15 minutes

P/N	NSN	COLOR	GSA	DLA
58205-003-A03		GREEN		
58205-003-A07		TAN		

LIGHT AIR MOBILE SHELTER [LAMs]



DIMENSIONS

Exterior

96"W x 178"L x 91.38"

Interior

92.3"W x 174.3"L x 81"H w/o generator
92.3"W x 140"L x 81"H w/generator

WEIGHT

3,990 lbs.

PAYLOAD

11,010 lbs.

MAX GROSS

15,000 lbs.



- Multi-use shelter designed for rapid deployment and prolonged use in austere conditions
- One person deployment in 15 min.
- Equipped with 208V/3PH/60A power distribution kit
- Can be transported on and off road via trailer and wheel sets using commercial pick up trucks
- Optional items: ECUs, Dehumidifier, Work Tables, Racks, Safety Kits, High Speed Mobility Wheel Set, Additional Cables, LED Lighting

P/N	NSN	COLOR	GSA	DLA
58201-006	5410-01-477-6800	GREEN	•	
58201-010		TAN		

EXPANDABLE LIGHT AIR MOBILE SHELTER [ELAMs]



STOWED DIMENSIONS

Exterior

96"W x 178"L x 91.38" or 96.25"H

Interior

92.6"W x 174.3"L x 81" or 87"H



DEPLOYED DIMENSIONS

Exterior

266"W x 178"L x 91.38" or 96.25"H

Interior

263"W x 174.3"L x 81" or 87"H

91.38" VERSION

WEIGHT

3,840 lbs.

PAYLOAD

11,160 lbs.

MAX GROSS

15,000 lbs.

96.25" VERSION

WEIGHT

4,080 lbs.

PAYLOAD

10,920 lbs.

MAX GROSS

15,000 lbs.

- Soft-sided 3:1 expandable
- Fits on most military and commercial trucks as well as flatracks
- 2-Way Forkliftable using standard 10,000 lb. forklift with 72" tines
- Can be easily erected in minutes by 2 people

P/N	NSN	COLOR	GSA	DLA
58200-022 (91.38"H)	8145-01-494-5922	GREEN	•	•
58200-020 (91.38"H)	8145-01-468-5926	TAN	•	•
58200-052 (96.25"H)		GREEN	•	•
58200-053 (96.25"H)		TAN	•	•

HARDSIDE EXPANDABLE LIGHT AIR MOBILE SHELTER [HELAMs]



STOWED DIMENSIONS

Exterior

96"W x 178"L x 96.25"H

Interior

79.7"W x 174.3"L x 87"H

WEIGHT

6,445 lbs.

PAYLOAD

9,210 lbs.

MAX GROSS

15,000 lbs.

DEPLOYED DIMENSIONS

Exterior

258"W x 178"L x 96.25"H

Interior

256"W x 174.3"L x 87"H



- Hardsided 3:1 expandable
- Wing walls fold down to serve as floors in expanded mode
- Side rooms enclosed with durable foam and beam and ceiling supported by struts
- Two person deployment in 30 min.
- Equipped with 208V/3PH/60A power distribution kit
- Can be transported on and off road via trailer and wheel sets using commercial pick up trucks
- Optional items: ECUs, Dehumidifier, Work Tables, Racks, Safety Kits, High Speed Mobility Wheel Set, Additional Cables, LED Lighting

P/N	NSN	COLOR	GSA	DLA
58204-001	8145-01-507-8684	GREEN	•	
58204-002	8145-01-507-8115	TAN	•	



20-FOOT ISO SHELTERS [TFI]

AAR Mobility Systems' 20-foot ISO Shelters (TFI) are unique in that they are lightweight, deploy quickly and intuitively, and are readily air-transportable in the C-130 with their movable corner blocks, roller plates, and 463L-compatible detachable detent rails - which eliminate the need for pallets and chains at the airfield (U.S. Patent No. US 7,717,290 B2).

Our shelters are designed to meet all key performance specifications of ASTM E-1925, ASTM E-1976, ISO 1496-1 and -2, ISO 1161-1990, and ISO 668-1995.

Our integration capabilities include all forms of Command, Control, Computers, Communications, Intelligence, Surveillance, and Reconnaissance (C4ISR); as well as expeditionary systems such as showers, latrines, laundries, and power generation units. The overall objective of our system integration process is to provide a system that not only meets performance requirements, but also maximizes the use of standardized parts and uses common components and layouts that can be employed in multi-vehicle and multi-node C4I system programs.

20-FOOT ISO FEATURES

- Aluminum frame with bonded "Foam-and-Beam" structural panels
- ISO Certified for air, land, or sea transport
- CSC Certified - 6-high stackable and 20,000 lb. gross weight rating
- Meets all key performance specifications of ASTM E1925, ASTM E1976, ISO 1161-1990, and ISO 668-1995
- Fixed Lower Corner Blocks come standard but are not compatible with Air Mobility option
- Air Mobility options (*US & Foreign Patented*)
 - Lower Corner Block options:
 - Integral Manual Jacks
 - Integral Electric Jacks
 - Retractable Corner Blocks
 - Longitudinal Built-In "Roller Plates" interface with aircraft cargo roller conveyors to allow for direct aircraft loading without supplemental pallets
 - Detachable "Detent Rails" - engage aircraft 463L restraint rail system and eliminate need for tie-down chains
- Internal Air Transportable (C-130 and larger military cargo aircraft)
- CARC or other exterior coating system per customer specifications
 - Optional EMI/RFI shielding

OPTIONAL CONFIGURATIONS

Interior Layout	Equipment Racks, Workstations, Furnishings, Electrical Arrangements - can all be tailored to customer specifications
Mechanical Room	Environmental Control Unit, Generator Selection and Arrangement - to suit mission requirements
Door Arrangement	Standard End-Wall Personnel Door - can be relocated and/or supplemented with other doors
Lower ISO Corner Options	Fixed Lower Corner Blocks, Integral Manual Jacks, Integral Electric Jacks, and Retractable Corner Blocks
Complexing	Light-Tight Vestibules - connect shelter to shelter
CBRN Collective Protection	Filters, Positive Pressure Systems, and Protective Entrances
EMI/RFI Shielding	To protect critical battlefield systems

MAX GROSS

20,000 lbs.

FLOOR WEIGHT RATING

Uniform Load: 65 lbs./sq.ft.

Concentrated Load: 2,000 lbs. over 4 sq.ft.

20-FOOT ISO SHELTER [TFI]



DIMENSIONS*

Exterior

96"W x 238.4"L x 96"H

Interior Wall to Wall Full Length

86.7"W x 228.9"L x 85.9"H

Interior Wall to Wall Mechanical Room

Main: 77.9"W x 157.3"L x 85.9"H

Mechanical Room: 86.7"W x 42.7"L x 85.9"H

NOMINAL TARE WEIGHT

4,000 lbs. Full Length

4,330 lbs. Mechanical Room and Fixed Corner Blocks

7,330 lbs. Mechanical Room, 20K Generator, 42K ECU, & Manual Jacks



Non-expandable, versatile and rugged deployment system

TFI

58301-TBD**	with Mechanical Room
58302-TBD**	Full Length

*Dimensions and weights listed are typical - actuals may vary based on customer requirements

**To be determined by customer requirements



DIMENSIONS STOWED*

Exterior

96"W x 238.4"L x 96"H

Interior Full Length

77.9"W x 228.9"L x 78.94"H

Interior Mechanical Room

Main: 77.9"W x 157.3"L x 78.94"H

Mechanical Room: 86.7"W x 42"L x 85.9"H

DIMENSIONS DEPLOYED*

Exterior

167"W x 238.4"L x 96"H

Interior Full Length

Main: 79.4"W x 228.3"L x 85.9"H

Expansion: 79.5"W x 199.2"L x 79.9"H

Interior Mechanical Room

Main: 77.9"W x 157.3"L x 85.9"H

Mechanical Room: 86.7"W x 42"L x 85.9"H"

Expansion: 79.6"W x 157.3"L x 78.9"H



NOMINAL TARE WEIGHT*

4,000 lbs. Full Length

4,330 lbs. w/Mechanical Room and Fixed Corner Blocks

7,330 lbs. w/Mechanical Room, 20K Generator, 42K ECU, & Manual Jacks

- 2-in-1 Expandable Shelter System
- Set-up: 2 trained soldiers, less than 15 minutes
- Expandable side is self-supporting - no additional jacks required
- Sidewall door

2:1 TFI	
58306-TBD**	with Mechanical Room
58308-TBD**	Full Length

**Dimensions and weights listed are typical - actuals may vary based on customer requirements*

***To be determined by customer requirements*



DIMENSIONS STOWED*

Exterior

96"W x 238.4"L x 96"H

Interior Full Length

86.7"W x 228.9"L x 85.9"H

Interior Mechanical Room

Main: 65.8"W x 144"L x 74"H

Mechanical Room: 86.7"W x 42.6"L x 85.9"H

DIMENSIONS DEPLOYED*

Exterior

238.7"W x 238.4"L x 96"H

Interior Full Length

Main: 74.2"W x 228.9"L x 85.9"H

Large Room: 79.5"W x 199.2"L x 78.9"H

Small Room: 80.9"W x 182.1"L x 74"H

Total: 329.49 sq. ft.

Interior Mechanical Room

Main: 74.2"W x 184.7"L x 85.9"H

Mechanical Room: 86.7"W x 42"L x 85.9"H

Large Room: 79.5"W x 199.2"L x 78.9"H

Small Room: 80.9"W x 182.1"L x 74"H

Total: 332.02 sq. ft.



NOMINAL TARE WEIGHT*

8,400 lbs. Full Length

14,000 lbs. w/Mechanical

Room, Generator and

ECU

- 3-in-1 Expandable Shelter System
- Set-up: 2 trained soldiers, less than 15 minutes
- Expandable side is self-supporting - no additional jacks required
- Sidewall door

3:1 TFI	
58305-TBD**	with Mechanical Room
58307-TBD**	Full Length

**Dimensions and weights listed are typical - actuals may vary based on customer requirements*

***To be determined by customer requirements*

MECC®
 [MOBILE EXPANDABLE
 CONTAINER
 CONFIGURATION]



- 20-ft.L x 8-ft.W x 8-ft.H expandable container with top and bottom fittings meeting ISO 1161
- External dimensions per ISO 668 Designation IC (19-ft. 101/2" L x 8-ft.W x 8-ft.H)
- High tensile steel frame
- Rugged steel exterior
- One durable, weatherproof personnel door (42"W x 73 3/4"H)
- Foam insulation walls, floors and ceiling
- 18 oz. vinyl-coated polyester and insulated cover in MECC wings
- Non-slip 2.0mm PVC flooring
- Safety equipment and labeling for expandable deployment
- Forklift pockets for both military and commercial forklifts
- Unit compliant with ISO 1496-6 and CSC Certified as such
- 9-high stackable
- Exterior finish in CARC green, CARC tan, or custom finish
- Interior walls covered in heavy duty white powdercoated aluminum
- Exterior fabric in 18 oz. high-tech UV-coated PVC, Reflectix insulation, inside white vinyl liner
- Enclosed winches for lowering and lifting side walls and floors
- Step set for roof access
- Six (6) side leveling jacks for ground mount
- Four (4) 10,000 lb. capacity corner jacks
- Open style side leveler brackets and receptacles for side and corner support jacks
- Two (2) 16" HVAC Ducts
- Electrical Package including:
 - 100 Amp Electrical Service
 - Eight (8) Light Fixtures (2 removable light fixtures in each wing, 4 fixed in center section);
 - 100 Amp IEC pin and sleeve input located in Power Input Panel
 - Four (4) 110 VAC deployable outlets
 - Six (6) NEMA 5-15R, 15A receptacles

DIMENSIONS

Exterior Stowed
 96"W x 240"L x 96"H

Exterior Deployed
 96"W x 240"L x 96"H

Interior Stowed
 160 sq. ft.

Interior Deployed
 400 sq. ft.

WEIGHT

9,000 lbs.

MAX GROSS
 24,000 lbs.

P/N	NSN	INCLUDES	GSA	DLA
50389-916	8145-01-490-4359	Standard MECC single door/double door w/electric		
50389-932	8145-01-490-4361	Standard MECC single door/single door w/electric		



VEHICLE MOUNTED SHELTERS

AAR manufactures versatile mobile shelters that are mountable directly to their carrier vehicles. These shelters provide highly transportable workspaces and storage for a variety of objectives such as logistics support, maintenance, administration, command-and-control, and other mission-essential functions in the battlefield environment.

Whether permanently mounted to a vehicle, such as the Lightweight Multi-Purpose Shelter (LMS), or designed to be positioned on the ground so that transport vehicles can perform other functions, such as the Mobility Shop Container (MSC) or Expandable Mobility Shop Container (EMSC), these rugged shelters are true workhorses intended to support and enhance military mobile functions.



LMS Type I mounted on a HMMWV

DIMENSIONS**Exterior**

84"W x 102"L x 67"H

Interior Floor Area

80.6"W x 100.6"L x 81.65"H or 86.5"H

Interior Volume

287 cu. ft.

Personnel Door Opening

30"W x 55"H

- True 90-degree/sharp interior corners
- Modular panel design allows for quick incorporation of changes in one or more panels to accommodate unique integration needs
- EMI-shielded (Type I, III, & Shortened)
- Corrosion resistant aluminum
- Standard and shortened (90") lengths available
- Ladder with 400 lb. capacity
- MIL-STD-209K lift rings
- ASTM E2377 compliant
- Mobility certified for: IAT, EAT, Rail & Ground

WEIGHT**Type I** 608 lbs**Type III** 643 lbs**Type V** 650 lbs**Shortened Type III** 600 lbs**PAYLOAD**

3,300 lbs.

P/N	NSN	TYPE	DESCRIPTION	COLOR
58323-002-A01	5411-01-598-4074	Type I	One Door	Green
58323-002-A05		Type I	One Door	Tan
58323-002-L01		Type I	One Door	Camo
58323-006-A01	5411-01-598-4072	Type III	One Door, Tunnel	Green
58323-006-A05		Type III	One Door, Tunnel	Tan
58323-006-L01		Type III	One Door, Tunnel	Camo
58323-007-A05	5411-01-616-4202	Type V	Double Rear Doors	Green
58323-007-A05		Type V	Double Rear Doors	Tan
58323-007-L01		Type V	Double Rear Doors	Camo

**OVERALL DIMENSIONS**

90"W x 185"L x 84"H

FOOTPRINT

165"L x 87"W

**50353-002
WEIGHT**

3,200 lbs.

PAYLOAD

4,700 lbs.

MAX GROSS

7,900 lbs.

**50353-001
WEIGHT**

3,500 lbs.

PAYLOAD

4,400 lbs.

MAX GROSS

7,900 lbs.

- Two models available: Mobility Shop Container (MSC) and MSC Office
- Fits on standard 5-ton truck, Family of Medium Tactical Vehicles, HEMTT, Flatbeds, PLS Flatracks, and more
- 2-Way forkliftable using standard 10,000 lb. fork truck with 72" tines
- Equipped with tie-down rings at four upper corners and 25" above the base corners
- Securable, interior emergency release built into the single entry personnel door at rear
- Transportable stairs that easily attach for easy entry and exit
- 120/208V, 3PH, WYE/60A power distribution that controls permanently mounted 120V electrical outlets placed above the work benches and along the walls
- Standard lighting package includes 120V fluorescent lights and a 24 VDC emergency and blackout light system
- Comes equipped with Environmental Control Unit (ECU), exhaust fan, and a dehumidification system
- Both models are equipped with a work bench, overhead book shelves, task lighting, parts trays on the left hand side, and shelves, trays, power strips, clothes closet and power panel on the right hand side, plus slave cable and floor cargo nets

P/N	NSN	GSA	DLA
50353-001	8145-01-467-0448	•	•
50353-002 (office)	8145-01-467-0445	•	•



OVERALL DIMENSIONS

90"W x 164"L x 84"H

FOOTPRINT

144"L x 87"W x 84"H

WEIGHT

3,500 lbs.

PAYLOAD

3,330 lbs.

MAX GROSS

6,830 lbs.

- Fits into the standard LMTV family of trucks
- Designed to be positioned on the ground, allowing transport vehicles to be available to perform other functions
- 2-Way forkliftable using standard 10,000 lb. fork truck with 72" tines
- Equipped with tie-down rings at four upper corners and 25" above the base corners for accessibility and versatility
- Securable, interior emergency release built into the single entry personnel door at rear
- Transportable stairs that easily attach for easy entry and exit
- 120/208V, 3PH, WYE/60A power distribution that controls permanently mounted 120V electrical outlets placed above the work benches and along the walls.
- Standard lighting package includes 120V fluorescent lights and a 24VDC emergency and blackout light system
- Comes equipped with Environmental Control Unit (ECU), exhaust fan, and a dehumidification system to maintain a comfortable working environment and to ensure all supplies/ tools/test equipment are constantly maintained in the best possible condition
- Equipped with a work bench, overhead book shelves, task lighting, under-bench shelves, parts trays on left hand side, and shelves, trays, power strips, and power panel on right hand side, slave cable and floor cargo nets

P/N	NSN	GSA	DLA
50353-050	8145-01-509-0245	•	•



OVERALL DIMENSIONS

Exterior

73"W x 107"L x 84"H

Interior

71.5"W x 78.7"L x 78"H

WEIGHT

2,100 lbs.

- M105 TSC designed to be fully functional on a trailer or to be positioned on ground, freeing transport trailer for other functions
- 2-way forkliftable using standard 10,000 lb. forklift with 72" tines
- Equipped with tie-down rings at upper four corners to secure container to trailer
- Modular high-density storage system consisting of thirty (30) 8"-deep storage trays
- Securable interior emergency release built in to single entry personnel door at rear
- Power supplied by power chord with female NEMA L5-15 twist-lock connector
- Permanently mounted 4-gang 120V electric outlet
- Standard lighting package includes 120V fluorescent lights
- Tie down kit included (PN 86060-008)

P/N	NSN	GSA	DLA
50353-020	8145-01-467-0441	•	•

**DIMENSIONS**

Exterior Stowed
87"W x 146"L x 84"H

Interior Stowed
81"W x 142"L x 75"H

Interior Floor
80 cu. ft.

Interior Deployed
233"W x 142"L x 75"H

Interior Floor
167 cu. ft.

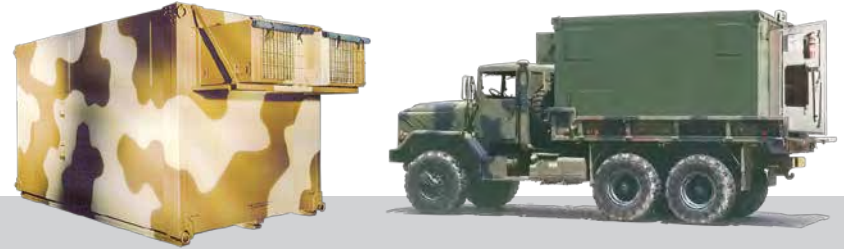
WEIGHT
4,300 lbs.

PAYLOAD
5,700 lbs.

MAX GROSS
10,000 lbs.

- 2-way forkliftable using standard 10,000 lb. fork truck with 72" tines
- 24K BTU/hr Cooling; 12K BTU/hr Heating; 300 lb. ECU (46"L X 26.5"W X 19.75"H); R-134a
- Integral panel for communications pass-through
- Outfitted for blackout operation
- Simple/fast deployment
- Easy to maintain
- Transportable by 2.5-ton and 5-ton trucks, (includes stairway for entry/exit when on truck), FMTV's and PLS Flatracks
- Built-in provision for HSMWS (60340-002) and LSMWS
- Upper and lower lift ring assemblies for lifting/moving with crane
- EMSC can be airlifted on 463L pallets
- 208V/3PH/60A/60Hz/4 wire plus ground power input; SBORD NATO Connector for 24VDC and grounding attachment
- Leveling jack kit for fully functional unit
- Winch system for safer lowering of fold-out sections

P/N	NSN	COLOR	GSA	DLA
50386-001	8145-01-486-2371	GREEN	•	•
50386-005		TAN		
50386-002 w/generator set	8145-01-467-0444	GREEN	•	•
50386-006		TAN		

**DIMENSIONS**

Exterior
87"W x 147"L x 83.38"H

Interior
82"W x 138"L x 77"H

Door
82"W x 138"L x 77"H

Quick-Release Panel in Door
23" x 28"

WEIGHT
1,400 lbs.

PAYLOAD
5,000 lbs.

MAX GROSS
6,400 lbs.

- Manufactured to meet MIL-S-55286 & ASTM-E1975 requirements
- Overall U-factor 0.28 BTU/hr/sq.ft./°F Insulation
- Single door with 90-degree door stop and louver panel (kick out for emergencies)
- Door closure has offset hinges with 3-point roller latch to allow a resilient gasket to seal against a continuous smooth frame providing a watertight seal
- Panel construction is 2" sandwich-type with closed cell rigid polyurethane foam hot bonded between two aluminum alloy skins
- Three easily replaceable shock skids provided to absorb impact shock
- Four lifting eyes and four tie-down eyes for lifting, towing, and tying (each has 11,000 lb. service)
- Three folding steps on one side of shelter to provide access to roof, along with a handhold
- Structural mounting points on 22" centers are provided for mounting shelves, equipment and racks
- Transportable by 5-Ton Tactical Trucks, M832 Dolly Set or HSMWS (use sling chains), Helicopters with 8,500 lb. or more hook capacity, C-130, C-141, C-5A, B-747, C-17 (with adapter air cargo pallets), Rail, and Ship
- EMI Shielded (50375-003 version)

P/N	NSN	DESCRIPTION
50375-001	5411-01-092-0892	Empty, Unshielded
50375-003	5411-01-304-3069	Empty, EMI-Shielded

M1087 EXPANDABLE VAN SHELTER [EVAN]



DIMENSIONS

Exterior Stowed
96"W x 278"L x 96"H

Exterior Deployed
164"W x 278"L x 96"H

WEIGHT
9,415 lbs.

PAYLOAD
5,585 lbs.

MAX GROSS
15,000 lbs.

- Expandable shelter for the Family of Medium Tactical Vehicle (FMTV) 5-ton truck chassis
- Equipped with tie-down rings at four upper corners
- Securable interior emergency release built into double personnel door at rear
- 120/208V/3PH/100A/60Hz power distribution panel that controls permanently mounted 120V electrical outlets placed along walls
- Standard lighting package includes 120V fluorescent lights and a 24VDC emergency and blackout light system

P/N	COLOR
50422-XXX	TAN OR GREEN

M1079 SHOP VAN SHELTER



DIMENSIONS

95"W x 187"L x 85"H

WEIGHT
4,060 lbs.

PAYLOAD
4,300 lbs.

MAX GROSS
8,360 lbs.

- Non-expandable shelter for the Light Medium Tactical Vehicle (LMTV) 2.5-ton truck chassis
- Equipped with tie-down rings at four upper corners
- Securable interior emergency release built into double personnel door at rear
- Transportable stairs that easily attach for easy entry and exit
- 120/208V/3PH/100A/60Hz power distribution panel that controls permanently mounted 120V electrical outlets placed along walls
- Standard lighting package includes 120V fluorescent lights and a 24VDC emergency and blackout light system

P/N	COLOR
50412-XXX	TAN OR GREEN

CRCS



DIMENSIONS

Exterior
79"W x 87"L x 70"H

Interior
75"W x 78"L x 64"H

WEIGHT
770 lbs.

MAX GROSS
3,300 lbs.

- Total IP-based C4 VI solution that exceeds tomorrow's requirements
- Truck mounted CRCS fits in the back of a 3/4 ton pick-up truck or HMMWW and runs off a regular power source or generator
- Quick set-up to an immediate operational workspace with training in minutes - not days or weeks
- Available in neutral colors as well as camouflage
- Absolute information exchange (radio, internet, video) between all first responders
- Scalable IT services to fit your needs and requirements
- Environmentally controlled, powered, and secure operating environment

P/N
20-00468

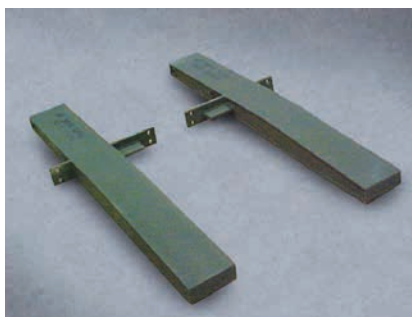
SHELTER ACCESSORIES



ELAMS positioned on High Speed Mobility Wheel Set

AAR Mobility Systems has a comprehensive line of accessories available to enhance their full line of shelters:

- Enhance mobilization capabilities with **High-Speed Mobility Wheel Sets** (*HSMWS pictured left*), **Adapter Rail Kit** for HSMWS, **Low-Speed Mobility Wheel Sets** (LSMWS), **20-Foot ISO/MECC® Mobility Trailer**, **20-Foot ISO Mobilizer**
- Optimize storage capabilities with **Cabinets, Desk, Shelves, and Bookcases**
- Repair canvas with our **Shelter Softwall Repair Kits**
- Secure and organize weapons during transport with specialized **Weapons Racks**
- Create two-high structure modules with our **ISO Mezzanine Systems**
- Utilize **Skid mounted ECU Kit** for shelters



HSMWS Adapter Rail Kit



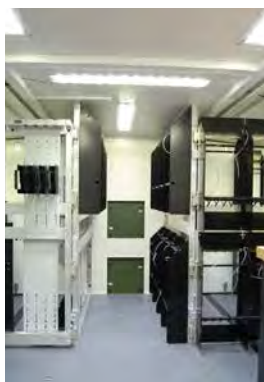
Low-Speed Mobility Wheel Set



Cargo Nets



Storage & Workspace Solutions



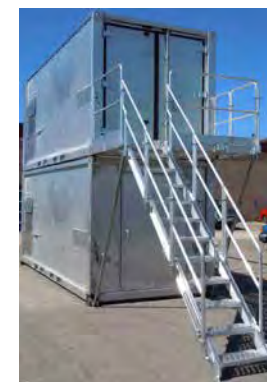
Weapons Racks



Skid Mounted ECU Kit



20-Foot Mobilizer



ISO Mezzanine

For part numbers or more information, please call 800-355-2015 or email mobility.systems@aarcorp.com



Pallets

AAR Mobility Systems has been providing 463L system Cargo Pallets to the United States Armed Forces since the early 1960's and continues to be the world leader in the design and production of 463L System Pallets.

The 463L HCU-6/E Air Cargo Pallet has been the mainstay for cargo movements in the United States Air Force since 1963. Further developments have led to the design and manufacture of enhanced palletized systems, such as Navy undersea rescue platforms, and palletized seating systems for all military transport aircrafts with the 463L aircraft cargo loading system.

AAR continues to lead the world in Palletized Systems development. Our air cargo pallets and palletized airlift systems include:

- Console/Rack Mission Pallets
- Pallets for Air-Transporting ISO Containers
- Custom Pallets for Unique Cargo
- Palletized Seat/Galley/Lavatory Systems
- Navy Undersea Rescue Vehicles
- Integrated Airborne Modules

AAR Mobility Systems is the original equipment manufacturer and the authorized remanufacture/repair center for both military and commercial pallets for the United States Air Force.

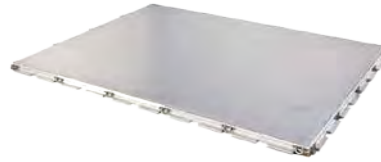
FEATURES

- Corrosion, heat, moisture and UV-light resistant
- Compatible with 463L load restraint system
- Bonded construction with aluminum facings and extrusions

CAPABILITIES

- Meets military and commercial air and land transport requirements
- Provides on-site short-term storage of equipment and materials
- Lightweight, durable construction
- Minimal field maintenance
- Provides rapid deployment of cargo
- Empty pallets can be stacked for storage
- Forkliftable with standard 10,000 lb. fork truck with 72" tines

463L HCU-6/E Pallet



P/N	NSN
50018-001	1670-00-820-4896

DIMENSIONS

108" L x 88" L x 2.25" H

TARE WEIGHT

300 lbs.

CAPACITY

10,000 lbs.

22 TIE-DOWN RINGS

CERTIFICATIONS	AIRCRAFT
MIL-DTL-27433	
Complies with Internal Aerial Delivery Requirements of MIL-HDBK-1791 of the following aircraft:	C-5
	C-9
	C-17
	C-27
	C-130
	CH-47
	CN-235
	KC-10
	KC-46
	KC-135

463L HCU-12/E Pallet



P/N	NSN
50031-001	1670-00-985-3149

DIMENSIONS

54" W x 88" L x 2.25" H

TARE WEIGHT

160 lbs.

CAPACITY

5,000 lbs.

16 TIE-DOWN RINGS

SIMILAR CONSTRUCTION AS 6/E VERSION AT HALF THE SIZE

CERTIFICATIONS	AIRCRAFT
MIL-DTL-27433	
Complies with Internal Aerial Delivery Requirements of MIL-HDBK-1791 of the following aircraft:	C-9
	C-17
	C-27
	CH-47
	CH-53
	KC-46
	KC-135
	CN-235

463L HCU-10/C Pallet



P/N	NSN
50029-001	1670-00-813-2837

DIMENSIONS

54" W x 88" L x 4.5" H

TARE WEIGHT

215 lbs.

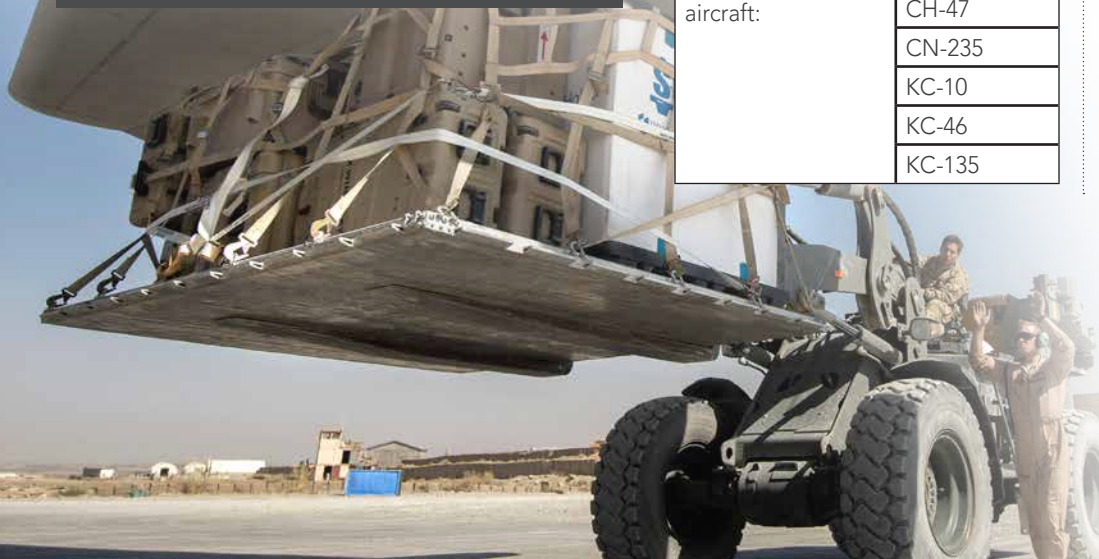
CAPACITY

5,000 lbs.

16 TIE-DOWN RINGS

FEATURES FORKLIFT TUBES HALF SIZE PALLET

CERTIFICATIONS	AIRCRAFT
MIL-DTL-27433	
Complies with Internal Aerial Delivery Requirements of MIL-HDBK-1791 of the following aircraft:	C-9
	C-17
	C-27
	CH-47
	CH-53
	KC-46
	KC-135
CN-235	



AIR CARGO PALLETS

- Corrosion, heat, moisture and UV-light resistant
- Bonded construction with aluminum facings and extrusions



INTEX AIR CARGO PALLET



P/N	NSN
50045-002	1670-01-398-1513



FEATURES

- Compatible with standard aircraft tie-down equipment
- Bonded construction with aluminum facings and extrusions
- 22 tie-down rings (7,500 lbs. capacity each in any direction)
- 4 lifting rings

CAPABILITIES

- For external use with all helicopters and for internal use with CH47/CH53 helicopters
- Compatible with military 463L restraint system
- External airliftable with government furnished sling or net
- Empty pallets can be stacked for storage
- 4-way forkliftable with standard 10,000 lb. fork truck with 72" tines

DIMENSIONS

88"W x 108"L x 4.6"H

WEIGHT

510 lbs.

PAYLOAD

10,000 lbs.

CERTIFICATIONS	AIRCRAFT
MIL-STD-209	
Complies with the Internal Aerial Delivery Requirements of MIL-HDBK-1791 of the following aircraft:	C-5
	C-9
	C-17
	C-27
	C-130
	CH-47
	CN-53
KC-10	
KC-135	

ISO AIR CARGO PALLET



20-FOOT ISO	
P/N	NSN
50052-001	1670-01-419-1549



DIMENSIONS

108"L x 240"W x 3.5"H
(4.63"H at clamping connectors in corner of pallet)

WEIGHT

1,700 lbs.

PAYLOAD

25,000 lbs.

10-FOOT ISO	
P/N	NSN
50052-002	

DIMENSIONS

125"W x 108"L x 3.5"H
(5.08"H at clamping connectors in corner of pallet)

WEIGHT

950 lbs.

PAYLOAD

10,000 lbs.

FEATURES

- Equipped with channels to accept shelter skirts
- Provides for C-130 emergency access aisle

CAPABILITIES

- Air-mobile 20-foot ISO adapter pallet
- Adaptable to the PLS Flatrack
- Slack-free corner connectors eliminate chain gates and other loading techniques for ISO containers/shelters
- Certified for transport on Air Mobility Command Transport Aircraft

CERTIFICATIONS	AIRCRAFT
Complies with the Internal Aerial Delivery Requirements of MIL-HDBK-1791 of the following aircraft:	C-5
	C-17
	C-130
Note: 10-Foot ISO Pallet is not ATTLA Certified	

SEAT PALLETS

AAR designed these seat pallets to be used in conjunction with onboard sidewall troop seats.

This system provides an efficient and expedient method of reconfiguring the aircraft. Seat pallets may be strategically prepositioned at forward operating locations to satisfy changing mission requirements.

SEAT FEATURES

- 16G forward restraint capacity at 250 lbs. total passenger weight plus equipment per seat
- 10, 12, and 15 seats per pallet available
- High comfort ergonomic design
- Passive lumbar support
- Seat-back mounted food trays
- Lift up arm rests

108" WIDE SEAT PALLETS



DIMENSIONS

108"W x 88"L x 47"H (w/seats)



AIR WORTHINESS CERTIFICATIONS

Seats certified to FAA TSO C127a (16G) and TSO C39b (9G)

PALLET FEATURES

- Fits the 108" wide on 463L cargo loading systems
- Non-skid floor surface
- Corner winch rings
- Four "no-tool" manually operated anti-rattle devices
- 7" hinge-mounted bridge on forward edge to cover gaps between pallets
- Seat-track fillers
- Protective pallet cover made of UV resistant fabric

SEAT PALLET SYSTEM 463L 108.0" WIDE 15 PASSENGER		
P/N	DETAILS	WEIGHT
50471-001	High durability Kevlar/Nomex seat cover, food trays, armrests, cover, non-skid gray flooring (supersedes P/N 50019-022)	795 lbs.
SEAT PALLET SYSTEM 463L 108.0" WIDE 10 PASSENGER		
P/N	DETAILS	WEIGHT
50471-003	High durability Kevlar/Nomex seat cover, food trays, armrests, cover, non-skid gray flooring (supersedes P/N 50019-023)	670 lbs.
SEAT PALLET SYSTEM 463L 108.0" WIDE 12 PASSENGER		
P/N	DETAILS	WEIGHT
50471-002	High durability Kevlar/Nomex seat cover, food trays, armrests, cover, non-skid gray flooring, 21" centerline aisle walkway (supersedes P/N 50019-024)	725 lbs.

88" WIDE SEAT PALLET



DIMENSIONS

88"W x 108"L x 47"H (w/seats)



AIR WORTHINESS CERTIFICATIONS

Certifiable to U.S.A.F. Air-Worthiness Standards
Seats certifiable to FAA TSO C127a (16G) and TSO C39b (9G)

PALLET FEATURES

- Fits the 88" wide on 463L cargo loading systems
- Non-skid floor surface
- Corner winch rings
- Four "no-tool" manually operated anti-rattle devices
- 7" hinge-mounted bridge on forward edge to cover gaps between pallets
- Seat-track fillers
- Protective pallet cover made of UV resistant fabric

CAPABILITIES

- A 56% increased passenger capability over centerline seating kit installation on C-17
- Provides the operator both an efficient and expedient method of reconfiguring the aircraft
- Complete or partial ship-sets may be strategically prepositioned at forward operating locations to satisfy changing mission requirements

SEAT PALLET SYSTEM 463L 88.0" WIDE 12 PASSENGER		
P/N	DETAILS	WEIGHT
50472-001	Kevlar/Nomex seat cover, seat back trays, lift-up armrest (supersedes P/N 50141-015)	790 lbs.

PALLET ACCESSORIES



AAR Mobility Systems has a comprehensive line of accessories available to enhance their full line of pallets:

- Optimize storage capabilities with **Air Cargo Nets** (pictured left), **Tie Downs**, **Air Cargo Net Storage Racks**, and **Tie Downs**
- Enhance mobilization capabilities with **Rollerized Tine Adapter Set** and **Pallet Couplers**
- Secure and organize pallets with **Pallet Stackers**
- Utilize Environmental Control Units and Generators with our **ECU/Generator Pallet**



Pallet Stacker



Air Cargo Net Storage Rack



Rollerized Tine Adapter Set



ECU/Generator Pallet



Tie-Downs



Pallet Coupler

For part numbers or more information, please call 800-355-2015 or email mobility.systems@aarcorp.com

SPACEMAX®

The SPACEMAX® by AAR Mobility Systems line of high-tech, foldable, portable buildings offer instant living and workspace solutions.

The many advantages to SPACEMAX®:

- Can deploy in less than 5 minutes in 6 easy steps with only 4 personnel
 - Optional deployment assist packages available: 2 people can safely deploy the unit in 5 minutes
- Ready-to-go plug and play system means less equipment, less labor and fewer worksite issues
- Fold and expand with a patented panel interconnection system that is water-tight
- Patented thermal-break design separates external and internal surfaces significantly increasing thermal efficiency
- 20-foot ISO platform, 6-high CSC certified
- Save on energy and deployment cost
- Lower Total Cost of Ownership = Higher ROI
- Greater comfort with moderated internal temperatures and a wide range of amenities



SPACEMAX® Series Comparisons

S100

The S100 expandable series is the largest and most customizable of all the SPACEMAX® shelters.



STOWED DIMENSIONS

Exterior

8'W x 20'L x 8.5'H

Interior

5.9'W x 18.7'L x 7.2'H

DEPLOYED DIMENSIONS

Exterior

22.4'W x 20'L x 8.5'H

Interior

20.3'W x 18.7'L x 7.2'H

WEIGHT

5,600 lbs.

SQ. FOOTAGE 379.61 sq. ft. *Mechanically assisted roof and floor deployment packages available.*

S200

Two expandable S200 series provides almost double the square footage as the S100 series with the same pre-expanded footprint.



STOWED DIMENSIONS

Exterior

3.9'W x 20'L x 8.5'H

Interior

1.7'W x 18.7'L x 7.2'H

DEPLOYED DIMENSIONS

Exterior

18.3'W x 20'L x 8.5'H

Interior

16.2'W x 18.7'L x 7.2'H

WEIGHT

4,600 lbs. each

SQ. FOOTAGE 302.94 sq. ft. each *Mechanically assisted roof and floor deployment packages available.*

S10

The SPACEMAX® S10 Series is a fixed-wall, no-nonsense shelter that is incredibly strong, light and instantly deployable.



DIMENSIONS

Exterior

8'W x 20'L x 8.5'H

Interior

7'W x 18.7'L x 7.2'H

WEIGHT

3,450 lbs.

SQ. FOOTAGE 130.9 sq. ft.

S20

The fixed-wall SPACEMAX® S20 series allows two fixed wall shelters to be transported in a single 8ft. x 8ft. x 20ft. footprint.



DIMENSIONS

Exterior

3.84'W x 20'L x 8.5'H

Interior

3.385'W x 18.7'L x 7.2'H

WEIGHT

2,950 lbs. each

SQ. FOOTAGE 63.29 sq. ft. each

SPACEMAX®
S100 SERIES



S100 FLEX



Dormitory (up to 12 beds)
or office (up to 8 stations)

OPTIONS

- Up to three windows
- One egress hatch
- Optional half bathroom (sink, toilet) or full bathroom (sink, toilet, shower)

P/N	COLOR
58315-002-T03	TAN
58315-002-T10	GREEN

S120 SLEEPER



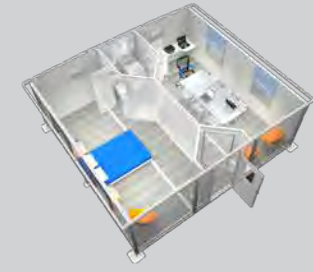
- Two or four room configurations
- Four, six, or eight beds per unit
- Central pass through corridor
- Prepared for HVAC

OPTIONS

- Up to three windows
- One egress hatch

P/N	COLOR
58315-003-T03	TAN
58315-003-T10	GREEN

S150 MANAGER



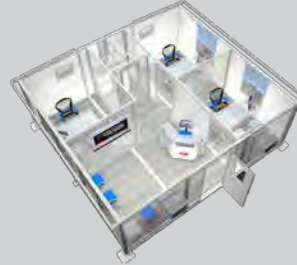
- Two private rooms for sleeping & office
- Bathroom (toilet, sink, shower)
- Prepared for HVAC
- One entry door

OPTIONS

- Up to three windows
- One egress hatch
- Optional compact kitchen

P/N	COLOR
58315-004-T03	TAN
58315-004-T10	GREEN

S190 PROFESSIONAL



- Two private rooms for sleeping and office
- Bathroom (toilet, sink, shower)
- Prepared for HVAC
- One entry door

OPTIONS

- Up to three windows
- One egress hatch
- Optional compact kitchen

P/N	COLOR
58315-006-T03	TAN
58315-006-T10	GREEN

S159 WORKMAN



- Two private rooms for sleeping and office
- Bathroom (toilet, sink, shower)
- Prepared for HVAC
- One entry door

OPTIONS

- Up to three windows
- One egress hatch
- Optional compact kitchen

P/N	COLOR
58315-005-T03	TAN
58315-005-T10	GREEN

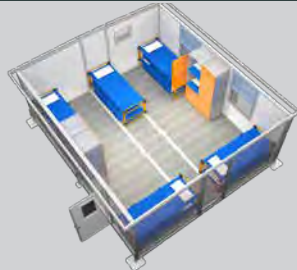
SPACEMAX®
S200 SERIES



SPACEMAX®
S20 SERIES



S200 FLEX



Dormitory – up to twelve beds
Office – up to six stations

- Purchased in pairs – 2 units combined by connectors to form a single shipping container

OPTIONS

- Up to three windows
- One egress hatch

P/N	COLOR
58316-001-T03	TAN
58316-001-T10	GREEN

SPACEMAX®
S10 SERIES



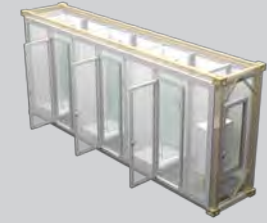
S20FL LATRINE



- Three private half bathrooms
- One mechanical room
- Ready for plumbing

P/N	COLOR
58318-002-T03	TAN
58318-002-T10	GREEN

S20FS SHOWER



- Three private showers
- One mechanical room
- Ready for plumbing

P/N	COLOR
58318-003-T03	TAN
58318-003-T10	GREEN

S10FW-W/D LAUNDRY UNIT



- Six washers
- Six dryers
- One wash sink
- Prepared for one HVAC
- Ready for plumbing
- One mechanical room

P/N	COLOR
58317-002-T03	TAN
58317-002-T10	GREEN

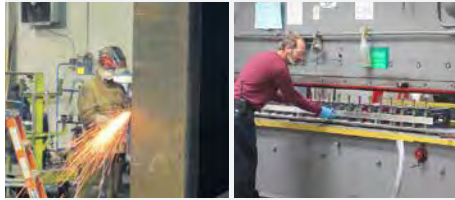
S10FW WASH UNIT



- Three private showers
- One mechanical room
- Ready for plumbing

P/N	COLOR
58317-003-T03	TAN
58317-003-T10	GREEN

Facilities



CADILLAC, MI

*Design, Prototype & Manufacture
Rapid Deployment Equipment*

- Over 370,000 Square Feet of Facilities in Cadillac, MI
- Production Manufacturing as well as Prototype First Articles
- Custom Design, Integration and Engineering Services
- Sheet Metal Machine Shop and Panel Bonding Capabilities
- LEAN Manufacturing Initiatives Ongoing
- GFE Storage Area
- ISO 9001:2015 Certified

GOLDSBORO, NC

*Design, Prototype & Manufacture
Rapid Deployment Equipment*

- Over 110,000 Square Feet of Facilities in Goldsboro, NC
- Full Production Manufacturing
- Sheet Metal Machine Shop and Panel Bonding Capabilities
- LEAN Manufacturing Initiatives Ongoing
- GFE Storage Area
- ISO 9001:2015 Certified

HUNTSVILLE, AL

*Design and Integration,
Depot Services*

- All functions in single 45,000 sq. ft. facility
- Near US Army and US Air Force operational HQs
- Secret and Top Secret capable
- Electronics Assembly & Integration
- Hardware & Software Design
- Complimentary Focus on Shelter and System Integration
- ISO 9001:2008 Certified

FAYETTEVILLE, NC

*Refresh, Reset & Recertify
Equipment*

- Near US Army and US Air Force operational HQs
- Internal and External Storage for GFE Equipment
- ISO and ISU® Container Repair and Certification
- Repair Teams Routinely Deploy within CONUS and OCONUS for On-Site Support
- Cost-Effective Shelter Refurbishment, Integration and Modifications
- Environmental Testing of Shelters & Containers
- Fabricate Aluminum and Canvas Components
- Life Cycle Support on Multiple Shelters and Containers (ASF, NAVAIR, SATS, FMTV, ISU®)

Procurement

AAR Mobility Systems products and services may be purchased using direct purchase orders, credit card/IMPAC, or the contract vehicles listed below.

DLA - Defense Logistics Agency:

DLA C&E Contract: SPE8ED-14-D-0001

Specialized shipping/storage containers, shelters and accessories.

C&E Contract POC

Lynne Gremo

Phone: (215) 737-7535

Email: lynne.gremo@dla.mil

Interested parties may also visit www.dla.mil for additional information.

DLA C&T Contract: SPE1C1-16-D-1056

Hybrid shelter systems, HSMWS, shelter parts, and accessories.

C&T Contract POC

Robin Gonzales

Phone: (215) 737-0388

Email: robin.kirkland-gonzales@dla.mil



GSA - General Services Administration:

GSA Contract: GS-07F-0065L (Schedule 056)

Air-mobile shelters and ISO shelters of various sizes and configurations, shop vans, several sizes and types of ISU® air mobility containers (parts storage, weapons rooms, refrigerated container, etc.), wheel sets for shelters and containers, aircraft seat pallets, and related accessories and equipment.

Our contract and product information is available on GSA Advantage website: www.gsaadvantage.gov



NSPA - NATO Support Procurement Agency

Contract: LB-AAR-01

Specialized storage and shipping containers, shelters, air cargo pallets and accessories.



Government Credit Card Direct:

Contact our sales department directly for credit card purchases and we'll take your order immediately.

Tel: 800.355.2015, email: milsales@aacorp.com.

AAR Mobility Systems

Large Business/SAM Registered

CAGE: 80298

DUNS: 069510246

TIN#: 38-2413129

NAICS: 321920, 321991, 322211, 322299, 326199, 332311, 332439, 332510, 332722, 332999, 333120, 333613, 333922, 333993, 334290, 334516, 336212, 336214, 336360, 336413, 336999, 339991, 339999, 423390, 423610, 531130, 532120, 541713, 541714, 541715, 811310

AAR Contracts Department

201 Haynes Street • Cadillac, MI 49601

800.355.2015 • email: milsales@aacorp.com

Contracts

NATO LOGISTICS STOCK EXCHANGE (NLSE) CONTRACT

CONTRACT: LB-AAR-01

DATES: 12/22/2016 -12/21/2019

PRODUCT WARRANTY: 24 months

NSLE WEBSITE: <http://www.nspa.nato.int/en/organization/logistics/LogServ/nlse.htm>

DESCRIPTION	NSN	PART NUMBER
96ATV 4-Door	8145-01-465-4572	56279-000
ISU® ADR-300 ADVANCED DESIGN REFRIGERATOR	4110-01-465-4564	56249-000
HELAMS	8145-01-507-8115	58204-002
HESAMS	8340-01-658-0103	58205-003-A07
ISU® 60 4-DOOR	8145-01-465-4194	56203-000
ISU® 70KC	8145-01-465-4565	56250-000
ISU® 70KCA	8145-01-478-9992	56288-000
ISU® 90 4-DOOR CONTAINER	8145-01-465-4187	56202-000
ISU® 90EO	8340-01-658-0102	56236-000
ISU® 90EO WEAPONS ROOM	8340-01-658-0101	56221-000
ISU® 90I	8145-01-465-4199	56216-000
ISU® 90I HIGH SECURITY CONTAINER	8145-01-500-3150	56290-000
20-FOOT ISO AIR CARGO PALLET	1670-01-419-1549	50052-001
ROLLERIZED TINE ADAPTER SET RUBBER NOSE	8145-01-469-1010	60136-002
INTEX AIR CARGO PALLET	1670-01-398-1513	50045-002
ISU® MEZZANINE SET	8145-01-484-2916	50120-002
ASSEMBLY DECK MEZZANINE	8145-01-478-0650	50120-201
STAIRWAY	8145-01-478-0688	50120-202
CARGO NETS for 463L PALLET PER MIL-N-27444	1670-00-969-4103	86801-005
ISU® REPAIR KIT	8145-01-391-3853	60085-001



FREE EQUIPMENT INSPECTIONS

Call or email to schedule your free inspections today!

Mobility.ServiceGroup@aarcorp.com

1-800-355-2015 Option 1, then 2



Contact Us

