

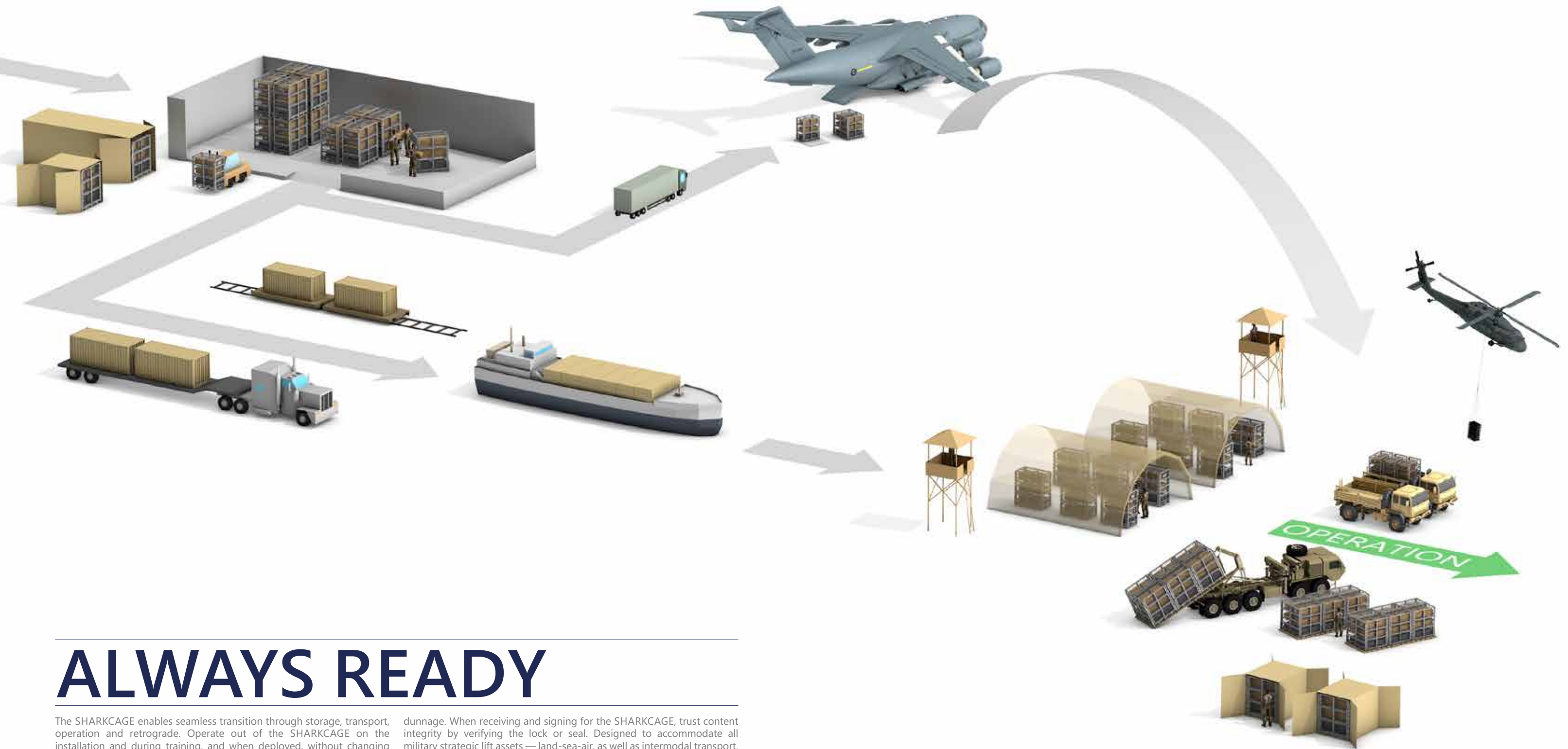


**SHARKCAGE®**



*TRAIN AS YOU FIGHT*

*FIGHT AS YOU TRAIN*



# ALWAYS READY

The SHARKCAGE enables seamless transition through storage, transport, operation and retrograde. Operate out of the SHARKCAGE on the installation and during training, and when deployed, without changing the SOP.

Secure the cage with standard padlocks and load the SHARKCAGE directly into any available transport platform in minutes with minimal need for

dunnage. When receiving and signing for the SHARKCAGE, trust content integrity by verifying the lock or seal. Designed to accommodate all military strategic lift assets — land-sea-air, as well as intermodal transport.

The SHARKCAGE will increase flexibility across the entire supply chain.



# MOBILITY



## TOPLIFT

Reinforced corner posts and connection points to accommodate crane, helicopter lift and UNREP according to MIL-STD-913A, -209K and -648D. Weld seams inspected according to RCX-3 to ensure safety.



## LAND-SEA-AIR

Shelves and panels do not fall out even in negative G-forces (up-side down). Strong enough for all modes of strategic transport; designed according to MIL-STD-1791D, -1366E and STANAG-3400.



## INTERMODAL

Transition seamlessly from one mode of transport to the next according to the definition in MIL-STD-3028.



## FORKLIFT

Four-way forklift capability compatible with most pallet jacks and forklifts. Designed to fulfill both the STANAG-2828 and 2829, as well as MIL-STD-648D, to ensure operability in joint operations.



## MINIMAL DUNNAGE

Secured in containers with minimal, if any, need for wooden bracing.

▲ FEATURES SHARED BY ALL SHARKCAGES ▼



# FLEXIBILITY



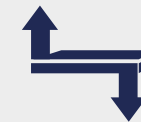
## MOVABLE

Rearrange the warehouse without packing and repacking the cages.



## STACKABLE

Self-centering corners to ensure safety and efficiency in stacking.



## ADJUSTABLE

Adjust shelves to the desired position without tools.



## NO TOOLS

No tools required for assembly, disassembly or reconfiguring of shelf positions.



## CONTENT VISIBILITY

See-through grid enables content visibility at all times. Optional covers are available to temporarily limit visibility.

▲ FEATURES SHARED BY ALL SHARKCAGES ▼



# SECURITY



## LOCKABLE

Lock using standard issue series 5200 padlocks.



## PROTECT

Prevent content from shifting during transport by utilizing strapping points on the inside of the cage and simplify compliance with MIL-HDBK-701.



## SAFETY

Increased handling safety for personnel as content is constrained, even if dropped or tipped.



## DURABLE

Extra high-strength steel and hot-dip galvanization to withstand any type of climate, handling or even fire.



## ANTI-SPARKING

Hot-dip galvanization completely removes risk of sparks from metal-to-metal contact.

# PRODUCTS

10 // CAGES

16 // BOXES

18 // ACCESSORIES

22 // CAGES AVAILABLE ON SPECIAL ORDER

26 // CASE STUDIES

TACTICAL LOCKERS P 10



WHEEL CAGES P 14



ORIGINAL P 13



TACTICAL BASKETS P 12

	<b>S</b>	<b>i90</b>	<b>M</b>	<b>CWL -</b>	<b>CWL</b>	<b>L</b>	<b>XL</b>	<b>CWXL</b>	<b>XXL</b>
	SIZE: (WxDxH) [in] 52"x42"x65"	SIZE: (WxDxH) [in] 49"x39"x79"	SIZE: (WxDxH) [in] 70"x41"x79"	SIZE: (WxDxH) [in] 55"x30"x83"	SIZE: (WxDxH) [in] 57"x30"x85"	SIZE: (WxDxH) [in] 84"x43"x85"	SIZE: (WxDxH) [in] 84"x52"x85"	SIZE: (WxDxH) [in] 77"x30"x85"	SIZE: (WxDxH) [in] 104"x42"x85"
	SHOWN IN: QUADCON	SHOWN IN: ISU-90	SHOWN IN: TRICON	SHOWN IN: 10 FT	SHOWN IN: 20 FT	SHOWN IN: 20 FT	SHOWN ON: 463L-Airpallet	SHOWN IN: 20 FT	SHOWN ON: 463L-Airpallet
	PLATFORM UTILIZATION	PLATFORM UTILIZATION	PLATFORM UTILIZATION	PLATFORM UTILIZATION	PLATFORM UTILIZATION	PLATFORM UTILIZATION	PLATFORM UTILIZATION	PLATFORM UTILIZATION	PLATFORM UTILIZATION
<b>PLATFORMS</b>									
	40 FT				Alternative layout	Alternative layout		Alternative layout	
20 FT				Alternative layout	Alternative layout			Alternative layout	
TRICON II									
QUADCON II USMC									
ISU-90									
463L Air Pallet									

\*The height of some products may deviate from the standards shown on this page.



SC-TL-MD-2D-03

SHARED FEATURES



HINGED DOORS



LOCKABLE COMPARTMENT

DESCRIPTION

The TACTICAL LOCKER has double doors secured by one standard padlock. The unique design ensures high capacity-to-weight ratio and maximum internal-to-external volume.

Shelves can be taken out, and the cage has multiple shelf positions.

SUITABLE FOR

Everyday access to tools, spare parts, dive gear and supplies, with the possibility of securing the equipment quickly.



SHARED FEATURES



AISLE IN CONTAINER



BLOCKING AND BRACING

SC-CW-WW-3F-03

DESCRIPTION

The TACTICAL LOCKER CW is made to fit in a 10ft (BICON) or 20ft container and use the blocking and bracing to keep an aisle open between the cages, even during transport. This makes it possible to use a standard container as a mobile warehouse and access equipment immediately after download or even during transit.

These cages are also popular outside the container because the depth is perfect for many storage situations and most content.

Shelves can be taken out and the cage has multiple shelf positions.

Some of these lockers come with panel doors that can be taken off, which is practical when space is limited or when the content is seldom secured. If the content should often be secured, a hinged door is better.

SUITABLE FOR

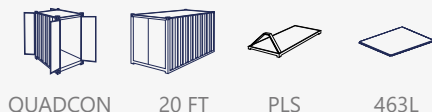
Storage inside containers, when aisle space is limited, or for storage situations outside the warehouse where the shallower depth is more suitable.



TACTICAL LOCKER SMALL

NSN: 8145-01-512-1023, PC: SC-TL-SM-2D-02

Size (W/D/H) 52/42/65 [in] | 132/106/165 [cm]  
 Weight 565lbs | 260kg  
 Capacity 5000lbs | 2250kg  
 Shelves Four levels



QUADCON 20 FT PLS 463L



TACTICAL LOCKER I90

NSN: 8145-01-512-1025, PC: SC-TL-90-2D-02

Size (W/D/H) 49/39/79 [in] | 125/100/200 [cm]  
 Weight 500lbs | 225kg  
 Capacity 4000lbs | 2000kg  
 Shelves Four levels



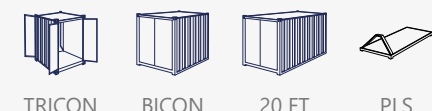
ISU 90 20 FT 463L



TACTICAL LOCKER MEDIUM

NSN: 8145-01-512-0901, PC: SC-TL-MD-2D-03

Size (W/D/H) 70/41/79 [in] | 178/105/200 [cm]  
 Weight 900lbs | 355kg  
 Capacity 5000lbs | 2250kg  
 Shelves Three levels



TRICON BICON 20 FT PLS



3 LOCKABLE COMPARTMENTS



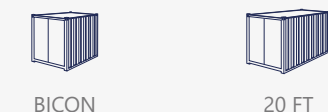
PANEL DOORS



TACTICAL LOCKER FP CWL-

PC: SC-CW-WW-3F-03

Size (W/D/H) 55/30/83 [in] | 140/75/210 [cm]  
 Weight 450lbs | 180kg  
 Capacity 4000lbs | 2000kg  
 Shelves Three levels



BICON 20 FT



1 LOCKABLE COMPARTMENT



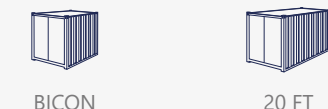
HINGED DOORS



TACTICAL LOCKER CWL

NSN: 5410-01-499-0723, PC: SC-TL-WL-2D-03

Size (W/D/H) 57/30/85 [in] | 145/75/216 [cm]  
 Weight 475lbs | 215kg  
 Capacity 4000lbs | 2000kg  
 Shelves Three levels



BICON 20 FT



4 LOCKABLE COMPARTMENTS



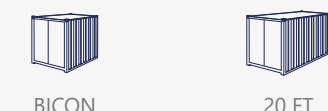
HINGED DOORS



QUADLOCKER CWL

NSN: 8145-01-512-0919, PC: SC-TL-WL-QD-02

Size (W/D/H) 57/30/83 [in] | 145/75/210 [cm]  
 Weight 580lbs | 265kg  
 Capacity 5000lbs | 2250kg  
 Shelves One in each compartment.



BICON 20 FT



3 LOCKABLE COMPARTMENTS



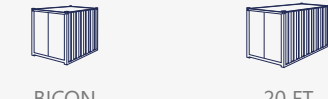
PANEL DOORS



TACTICAL LOCKER FP CWXL

NSN: 8145-01-512-1019, PC: SC-TL-XL-3F-03

Size (W/D/H) 76/30/86 [in] | 194/75/218 [cm]  
 Weight 610lbs | 275kg  
 Capacity 4000lbs | 2000kg  
 Shelves Three levels



BICON 20 FT

## TACTICAL BASKET



SC-BA-XL-GT-01 WITH VERTICAL DIVIDERS SC-BA-XL-00-22

### SHARED FEATURES



TOP AND FRONT ACCESS



LOCKABLE COMPARTMENT

### DESCRIPTION

The TACTICAL BASKET has a gas spring assisted top lid and front gate that are secured with one standard padlock.

The gate can be used to roll tents or covers into the cage, or to simplify walking into the cage when stacking equipment. The gate is also detachable.

The HALF GATE (HG) version has a gate which folds down. This makes it easier to access equipment inside the cage, especially if it is stacked. This gate is not detachable.

For all TACTICAL BASKETS we have both full and half gates available, but the version not listed here is in the *SPECIAL ORDER* section (p. 24).

### SUITABLE FOR

Covers, tents, parachutes and other large items.



SC-BA-MD-HG-01 **HALF GATE (HG)**



SC-BA-XL-GT-01



4 EA SC-BA-MD-GT-01  
IN A TRICON CONTAINER

## THE ORIGINAL

### SHARED FEATURES



PANEL DOORS



COLLAPSIBLE



AMMUNITION CERTIFIED



SC-CI-MD-3P-02

### DESCRIPTION

THE ORIGINAL has a collapsible design, which can be assembled and disassembled without tools. It has panels on both sides that are detached for accessing equipment in the cage. Each panel is locked individually with a standard padlock. The cage has multiple shelf positions.

### SUITABLE FOR

Contingency and ammunition storage, deployment and container management.



LOCKABLE COMPARTMENTS



### ORIGINAL SMALL

NSN: 8145-01-512-1022, PC: SC-ST-IF-3P-02

Size (W/D/H) 52/42/62 [in] | 132/106/158 [cm]  
Weight 600lbs | 270kg  
Capacity 5000lbs | 2250kg  
Shelves Three levels



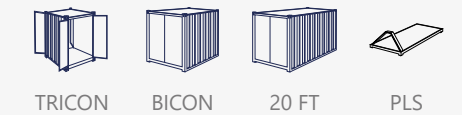
LOCKABLE COMPARTMENTS



### ORIGINAL MEDIUM

NSN: 8145-01-562-0607, PC: SC-CI-MD-3P-02

Size (W/D/H) 70/41/79 [in] | 178/104/200 [cm]  
Weight 650lbs | 290kg  
Capacity 5000lbs | 2250kg  
Shelves Three levels



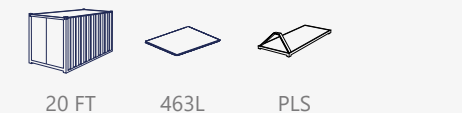
LOCKABLE COMPARTMENTS



### ORIGINAL LARGE

NSN: 8145-01-512-0923, PC: SC-CI-LG-4P-02

Size (W/D/H) 84/43/85 [in] | 213/110/216 [cm]  
Weight 960lbs | 440kg  
Capacity 5000lbs | 2250kg  
Shelves Four levels



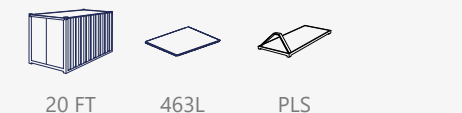
LOCKABLE COMPARTMENTS



### ORIGINAL XXL

NSN: 8145-01-586-0404, PC: SC-CI-XX-4P-02

Size (W/D/H) 104/42/85 [in] | 265/107/216 [cm]  
Weight 1300lbs | 590kg  
Capacity 5000lbs | 2250kg  
Shelves Four levels





SC-WS-LG-GT-01

FEATURES



ADAPT TO WHEEL SIZE



VERTICAL STORAGE

DESCRIPTION

The Wheel Storage and Transport (WST) I fits up to 6 ea HMMWV wheel assemblies while stacking two-high in a 20ft container, increasing the capacity of a 20ft container to 60 ea HMMWV wheel assemblies. The pivoting front gate, secured by two standard cargo straps, and adjustable side walls, enable fit for most military wheels.

We have developed an optional extender (SC-WS-LG-GT-61) for the largest wheels, of 52" and up.

SUITABLE FOR

Units and warehouses that store and deploy with large amounts of wheels. Enables compliance with vertical stacking requirement. Fits wheels up to 51" tall. With extenders (accessory), WST I fits wheels up to 74" tall.



WHEEL STORAGE AND TRANSPORT (WST) I

NSN: 8145-01-586-0408, PC: SC-WS-LG-GT-01

Size (W/D/H) 89/45/59\* [in] | 226/115/150\* [cm]

Weight 460lbs | 210kg

Capacity 4000lbs | 2000kg

\*Adjustable height based on wheel size



20 FT



463L



PLS



SC-WS-HD-TP-01

FEATURES



ADAPT TO WHEEL SIZE



VERTICAL STORAGE

DESCRIPTION

The WHEEL STORAGE AND TRANSPORT II was designed to accommodate run-flat MRAP wheels of up to 2,500lbs each, but is also used by units that have low quantities of wheels. The WST II secures the wheels by lowering the entire top construction to lock the wheels in place. The front gate slams shut and can be used to secure the wheels in storage for easier access.

SUITABLE FOR

Vertical storage and transportation of two large wheels from 35" to 54" in diameter and 2500 lbs each in compliance with vertical storage requirements for pneumatic wheels, according to the Joint Service Manual.



WHEEL STORAGE AND TRANSPORT (WST) II

NSN: 8145-01-512-0913, PC: SC-WS-HD-TP-01

Size (W/D/H) 44/55/67\* [in] | 111/139/170\* [cm]

Weight 400lbs | 175kg

Capacity 5000lbs | 2250kg

\*Adjustable height based on wheel size



20 FT



463L



PLS

FEATURES



COLLAPSIBLE



TX-SR-XX-ST-02

DESCRIPTION

STACK RACK has two detachable end walls and detachable pallet stoppers in the back. It is assembled in minutes. Accommodates two pallets side by side, with ample room for slack. Collapsible to a height of 11", making it possible to fit 28 ea flat packed into a 20ft container and 80 ea into a 40ft container.

The STACK RACK comes with standard hot-dip galvanizing, like our other cages, but can be painted with red horizontally and blue vertically for increased safety in the warehouse.

Add a gridded back wall to prevent loose items falling off the back.

SUITABLE FOR

Temporary and deployed warehouses, but standard warehouses could also benefit from the flexibility of the STACK RACK.

Accommodates EURO pallets, US military standard pallets and most other common pallets in the US.



STACK RACK XXL+

NSN: 8145-01-512-1017, PC: TX-SR-XX-ST-02

Size (W/D/H) 115/44/60 [in] | 293/113/148 [cm]

Weight 350lbs | 150kg

Capacity 5000lbs | 2250kg

Stackable Four high



XXL+ GRID BACK WALL

NSN: 8145-01-512-0926, PC: TX-SR-XX-ST-22, ACCESSORY FOR STACK RACK XXL+

Size Fits the STACK RACK XXL

Weight 50lbs | 22kg

Description Assemble without tools. It will not fit inside the standard flatpack of the cage.



XXL+ VISIBILITY PAINT

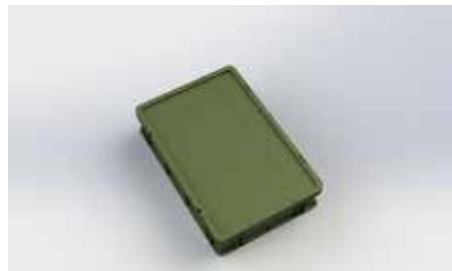
PC: TX-SR-XX-ST-70, ACCESSORY FOR STACK RACK XXL+

Weight 7lbs | 3kg

Description Red horizontally and blue vertically. Paint added on top of the galvanization for same corrosion resistance as our other cages.





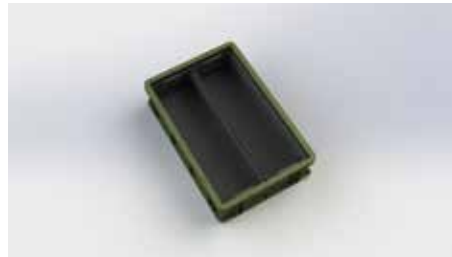


**POB 6**

PC: PB-60-40-06-02

Size (W/D/H) 16/24/6 [in] | 40/60/16 [cm]  
 Weight 6lbs | 3kg  
 Capacity 100lbs | 50kg  
 Includes Lid

Fits well in cages of this size:

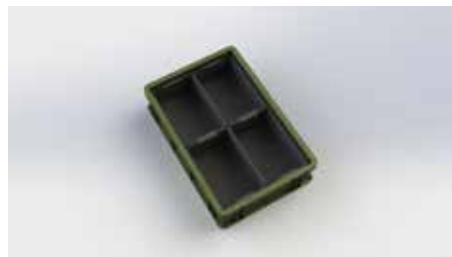
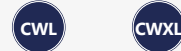


**POB 6 WITH DIVIDER KIT 2 LONG**

PC: PB-60-40-06-2L

Size (W/D/H) 16/24/6 [in] | 40/60/16 [cm]  
 Weight 9lbs | 4kg  
 Capacity 100lbs | 50kg  
 Includes Lid and removable dividers splitting the box into two long compartments.

Fits well in cages of this size:



**POB 6 WITH DIVIDER KIT 4**

PC: PB-60-40-06-4S

Size (W/D/H) 16/24/6 [in] | 40/60/16 [cm]  
 Weight 9lbs | 4kg  
 Capacity 100lbs | 50kg  
 Includes Lid and removable dividers splitting the box into four compartments.

Fits well in cages of this size:

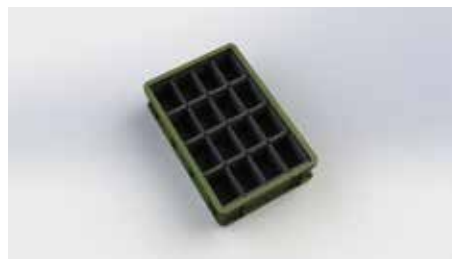


**POB 6 WITH DIVIDER KIT 8**

PC: PB-60-40-06-8S

Size (W/D/H) 16/24/6 [in] | 40/60/16 [cm]  
 Weight 10lbs | 4.5kg  
 Capacity 100lbs | 50kg  
 Includes Lid and removable dividers splitting the box into eight compartments.

Fits well in cages of this size:



**POB 6 WITH DIVIDER KIT 16**

PC: PB-60-40-06-16

Size (W/D/H) 16/24/6 [in] | 40/60/16 [cm]  
 Weight 10lbs | 4.5kg  
 Capacity 100lbs | 50kg  
 Includes Lid and removable dividers splitting the box into sixteen compartments.

Fits well in cages of this size:

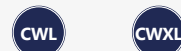


**POB 12**

PC: PB-60-40-12-02

Size (W/D/H) 16/24/12 [in] | 40/60/29 [cm]  
 Weight 7lbs | 3.5g  
 Capacity 100lbs | 50kg  
 Includes Lid

Fits well in cages of this size:



**PADDED DIVIDERS FOR SERIES 12 BOXES**

PC: AB-00-CW-12-PD, FOR POB 12 AND ALUMABOX CW 12

Size (W/D/H) 16/24/6 [in] | 40/60/16 [cm]  
 Weight 2lbs | 1kg  
 Description Adjust spacing in the compartments by moving or removing some of the dividers.

Fits well in boxes of size 12

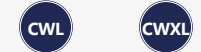


**ALUMABOX CW 12**

PC: AB-54-CW-12-01

Size (W/D/H) 16/24/11 [in] | 40/60/28 [cm]  
 Weight 10lbs | 4.5kg  
 Capacity 100lbs | 50kg

Fits well in cages of this size:



**ALUMABOX M 10**

PC: AB-54-MD-10-01

Size (W/D/H) 35/14/10 [in] | 90/36/25 [cm]  
 Weight 13lbs | 6kg  
 Capacity 100lbs | 50kg

Fits well in cages of this size:



**WORKSTATION AND BOX-RACK**

See the next page for product codes for these and more accessories



SC-TL-MD-2D-03 WITH BR-WS-04-03-81

**DESCRIPTION**

The WORKSTATION or BOX-RACK can be added as an accessory to a TACTICAL LOCKER and works as drawers. Easily pull a box out and bring it to the operation. The sliding is made without moving parts, which makes it very durable even in wet or dusty environments.

The WORKSTATION has a BOX-RACK and a fold-down or pull-out table. The MEDIUM WORKSTATION has a fold-down table and the CWL WORKSTATION table is pull-out.

The standard BOX-RACKs works with all the POB-6 boxes. BOX-RACK for POB-12 and ALUMABOX CW 12 are available on order.

The BOX-RACKS can also work without boxes to compartmentalize a section of the cage.

**SUITABLE FOR**

Small part storage.



SC-TL-WL-2D-03 WITH BR-WS-03-03-81



SC-TL-MD-2D-03 WITH BR-WS-04-03-81



SC-TL-MD-2D-03 WITH BR-WS-04-03-81

Product codes for accessories which fit the cages below

Product codes for accessories which fit the cages below, no value means it is not available

TACTICAL LOCKER

TACTICAL LOCKER FP

TACTICAL BASKET

THE ORIGINAL

LOCKER SIZE:

S

I90

CWL

M

CWL-

CWXL

M

XL

XXL

M

L

XXL

PRODUCT CODE:

SC-TL-SM-2D-02

SC-TL-90-2D-02

SC-TL-WL-2D-03

SC-TL-MD-2D-03

SC-CW-WW-3F-03

SC-CW-XL-3F-03

SC-BA-MD-HG-01

SC-BA-XL-GT-01

SC-BA-XX-GT-01

SC-CI-MD-3P-02

SC-CI-LG-4P-02

SC-CI-XX-4P-02



**BOX-RACK 6**

Description The BOX-RACK 6 is a cassette for POB 6 boxes allowing accesses to the bottom box without lifting the two above. Comes without boxes, add POB 6 to fill it up.

PR-RC-03-03-06

PR-RC-03-03-06

PR-RC-04-03-06

For 4x3 POB 6 boxes, totalling twelve boxes in one rack.



**WORKSTATION**

Description The BOX-RACK with work bench has a folddown or slide-out table which can be used for a computer, or to put the boxes on while accessing the equipment. Includes boxes.

BR-WS-03-03-81  
8145-01-512-1006

BR-WS-04-03-81  
8145-01-499-0721

BR-WS-03-03-83

BR-WS-04-03-81

Slide out table and 3x3 POB 6 boxes

Folddown table, 3x3 POB 6 boxes and an extra column of smaller boxes.

Slide out table and 3x3 POB 6 boxes

Slide out table and 4x3 POB 6 boxes.



**STANDARD SHELF**

Description Add more shelves to your cage. The fixtures are included.

For illustration, the picture shows the SHELF in a transparent cage.

SC-TL-SM-00-21

SC-TL-90-00-21

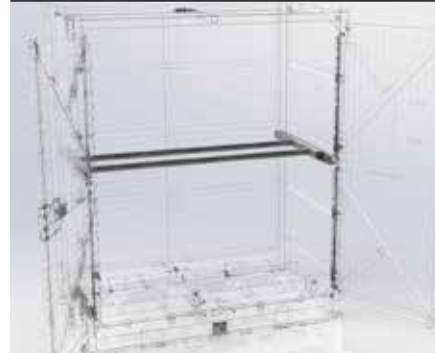
SC-TL-WL-00-21

SC-TL-MD-00-21

SC-CW-WW-00-21

SC-CW-XL-00-21

SC-BA-XL-GT-21



**DUAL HANGER, SIDE-TO-SIDE**

Description Two steel tubes running from side to side of the cage. Can be rotated to work either as one hanger in the middle or two, evenly spaced from each side.

For illustration, the picture shows the HANGERS in a transparent cage.

SC-TL-SM-00-25

SC-TL-90-00-25

SC-TL-WL-00-25

SC-TL-MD-00-25

SC-CW-WW-00-25

SC-CW-XL-00-25



**CANTILEVER, BACK-TO-FRONT**

Description Steel tubes pointing towards the opening from the back. Perfect for vests and wetsuits, as well as cables.

For illustration, the picture shows the CANTILEVERS in a transparent cage.

SC-TL-SM-00-26

SC-TL-90-00-26

SC-TL-WL-00-26

SC-TL-MD-00-26

SC-CW-WW-00-26

SC-CW-XL-00-26

SC-BA-XL-GT-26

Product codes for accessories which fit the cages below

Product codes for accessories which fit the cages below, no value means it is not available

**TACTICAL LOCKER**

**TACTICAL LOCKER FP**

**TACTICAL BASKET**

**THE ORIGINAL**

LOCKER SIZE:

S

190

CWL

M

CWL-

CWXL

M

XL

XXL

M

L

XXL

PRODUCT CODE: SC-TL-SM-2D-02 SC-TL-90-2D-02 SC-TL-WL-2D-03 SC-TL-MD-2D-03

SC-CW-WW-3F-03 SC-CW-XL-3F-03 SC-BA-MD-HG-01 SC-BA-XL-GT-01 SC-BA-XX-GT-01 SC-CI-MD-3P-02 SC-CI-LG-4P-02 SC-CI-XX-4P-02



**DIVIDER WALLS**

Description Divide a TACTICAL BASKET vertically into two or more compartments.

								SC-BA-MD-00-22	SC-BA-XL-00-22	SC-BA-XX-00-22			
--	--	--	--	--	--	--	--	----------------	----------------	----------------	--	--	--



**BACK AND SIDE PLATES**

Description Back and side plates added inside the grid to reduce airflow, prevent equipment from getting stuck in the grid, limit visibility or to provide a different look.

			SC-TL-WL-QD-74					SC-BA-MD-GT-75	SC-BA-XL-GT-75	SC-BA-XX-GT-75			
							For QUAD LOCKER CWL only. Blue color.						



**CONTAINER BLOCKING AND BRACING**

Description Used to keep the center aisle open in a container, even during transport. This will enable a walkway and make all equipment accessible inside the container. Add one per cage.

				SC-CW-00-02-60 8145-01-499-0720				SC-CW-00-02-60 8145-01-499-0720	SC-CW-00-02-60 8145-01-499-0720				
--	--	--	--	------------------------------------	--	--	--	------------------------------------	------------------------------------	--	--	--	--



**COVERS**

Description Add a cover to protect equipment inside the cage against the elements. Access strapping points through openings in the cover. Dove gray is standard color.

	SC-TL-SM-CV-41 8145-01-512-1002	SC-TL-90-CV-41 8145-01-512-1005	SC-TL-WL-CV-41 8145-01-512-0935	SC-TL-MD-CV-41 8145-01-512-1003								SC-CI-MD-CV-41 8145-01-512-1003	SC-CI-LG-CV-41 8145-01-512-1004	SC-CI-XX-CV-41
--	------------------------------------	------------------------------------	------------------------------------	------------------------------------	--	--	--	--	--	--	--	------------------------------------	------------------------------------	----------------



**UNIVERSAL WHEEL KIT**

Description Four heavy-duty wheels which attach to the cage for increased mobility in the warehouse. Fits almost all SHARKCAGES.

	SC-AC-WH-GA-01 8145-01-512-0909	SC-AC-WH-GA-01 8145-01-512-0909	SC-AC-WH-GA-01 8145-01-512-0909	SC-AC-WH-GA-01 8145-01-512-0909				SC-AC-WH-GA-01 8145-01-512-0909	SC-AC-WH-GA-01 8145-01-512-0909	SC-AC-WH-GA-01 8145-01-512-0909	SC-AC-WH-GA-01 8145-01-512-0909	SC-AC-WH-GA-01 8145-01-512-0909	SC-AC-WH-GA-01 8145-01-512-0909	SC-AC-WH-GA-01 8145-01-512-0909
--	------------------------------------	------------------------------------	------------------------------------	------------------------------------	--	--	--	------------------------------------	------------------------------------	------------------------------------	------------------------------------	------------------------------------	------------------------------------	------------------------------------



### TACTICAL LOCKER MODULE

PC: SC-TL-MO-2D-01

Size (W/D/H) 35/29/40 [in] | 90/73/101 [cm]  
Weight 225lbs | 100kg  
Capacity 2000lbs | 1000kg

Lightweight modular individual storage that fits well in TRICON and 20ft containers.



### TACTICAL LOCKER HALF HEIGHT CWL

PC: SC-CW-WS-2D-01

Size (W/D/H) 57/30/42 [in] | 145/75/105 [cm]  
Weight 320bs | 150kg  
Capacity 2000lbs | 1000kg

Double doors, and the ideal size to combine with a full height CWL to create a table height section in the mobile warehouse.



### SCUBA TANK LOCKER

PC: SC-TL-21-2D-02

Size (W/D/H) 60/34/47 [in] | 152/87/120 [cm]  
Weight 375lbs | 170kg  
Capacity 1500lbs | 700kg

Rolling cage for storing and transporting scuba tanks horizontally with rubberized surface touching the tanks.



### TACTICAL LOCKER WLW

PC: SC-TL-LW-2D-02

Size (W/D/H) 35/24/83 [in] | 90/60/210 [cm]  
Weight 330lbs | 150kg  
Capacity 3000lbs | 1500kg

Grid mesh locker with lockable doors and adjustable shelf positions.



### GEAR LOCKER 24X30X85

PC: SC-CW-10-1D-03

Size (W/D/H) 24/30/85 [in] | 60/75/216 [cm]  
Weight 315lbs | 145kg  
Capacity 2000lbs | 1000kg

Split in the center with space for hanging a dive suit to the right and for oxygen bottles in the bottom right, with shelves above for other gear.



### GEAR LOCKER 38X30X85

PC: SC-CW-11-2D-03

Size (W/D/H) 38/30/85 [in] | 97/75/216 [cm]  
Weight 430lbs | 195kg  
Capacity 2000lbs | 1000kg

Split in the center with space for hanging dive suits to the right and shelves to the left and on the top for other gear.



### TACTICAL LOCKER FP CWL- NO POCKET

PC: SC-CW-WW-3F-91

Size (W/D/H) 55/30/78 [in] | 139/76/199 [cm]  
Weight 365lbs | 165kg  
Capacity 3000lbs | 1500kg

Perfect for insulated 20x8" container with built-in A-frame with hook. The cage has three removeable panels.



### TACTICAL LOCKER CWM I

PC: SC-CW-M1-2D-03, ADD BLOCK + BRACE KIT PER CAGE (NSN: 8145-01-499-0720)

Size (W/D/H) 41/28/78 [in] | 105/70/200 [cm]  
Weight 350lbs | 160kg  
Capacity 3000lbs | 1500kg

Double doors, and the ideal size for transforming a TRICON into a mobile warehouse with blocking and bracing. One side with CWM and the other with CWM II.



### TACTICAL LOCKER CWM II

PC: SC-CW-M2-2D-03, ADD BLOCK + BRACE KIT PER CAGE (NSN: 8145-01-499-0720)

Size (W/D/H) 41/20/78 [in] | 105/50/200 [cm]  
Weight 300lbs | 140kg  
Capacity 3000lbs | 1500kg

Double doors, and the ideal size for transforming a TRICON into a mobile warehouse with blocking and bracing.



### TACTICAL LOCKER FP WCS LOW

PC: SC-CW-02-3F-03, ADD BLOCK + BRACE KIT PER CAGE (NSN: 8145-01-499-0720)

Size (W/D/H) 49/28/64 [in] | 125/72/162 [cm]  
Weight 325lbs | 150kg  
Capacity 3000lbs | 1500kg

For insulated 20x8" container with built-in A-frame with hook. The cage has three removeable panels.



### TACTICAL LOCKER FP WCS

PC: SC-CW-01-4F-03, ADD BLOCK + BRACE KIT PER CAGE (NSN: 8145-01-499-0720)

Size (W/D/H) 49/28/83 [in] | 125/72/210 [cm]  
Weight 400lbs | 180kg  
Capacity 3000lbs | 1500kg

For insulated 20x8" container with built-in A-frame with hook. The cage has three removable panels.



### TACTICAL LOCKER FP CWL

PC: SC-TL-WL-3F-03, ADD BLOCK + BRACE KIT PER CAGE (NSN: 8145-01-499-0720)

Size (W/D/H) 57/30/85 [in] | 145/75/216 [cm]  
Weight 420bs | 190kg  
Capacity 4000lbs | 2000kg

Three panels, and the ideal size for transforming a 20ft container into a mobile warehouse.



### QUAD LOCKER CWL (WITH SIDE PLATES)

PC: SC-TL-WL-QD-81, ADD BLOCK + BRACE KIT PER CAGE (NSN: 8145-01-499-0720)

Size (W/D/H) 57/30/83 [in] | 145/75/210 [cm]  
Weight 580lbs | 285kg  
Capacity 5000lbs | 2250kg

Four doors, and the ideal size for transforming a 20ft container into a mobile warehouse or as a flexible storage section for individuals or equipment.



### TACTICAL LOCKER SPLIT MEDIUM

PC: SC-TL-MD-2D-02

Size (W/D/H) 70/41/79 [in] | 178/105/200 [cm]  
Weight 925lbs | 420kg  
Capacity 5000lbs | 2250kg

Perfect fit for TRICON and good fit in 20ft containers. Comes with double doors and the cage is split in the middle for half-width shelves.



### TACTICAL BASKET MEDIUM

PC: SC-BA-MD-GT-01

Size (W/D/H) 70/41/39 [in] | 178/105/100 [cm] Perfect fit for TRICON containers, with full gate front and gas lift assisted top opening.  
 Weight 455lbs | 205kg  
 Capacity 3000lbs | 1500kg  
 Dividers Available as accessory



### TACTICAL BASKET LARGE+

PC: SC-BA-LP-GT-01

Size (W/D/H) 89/45/41 [in] | 225/115/105 [cm] Perfect fit for 20ftx8ft containers, with full gate front and gas lift assisted top opening.  
 Weight 565lbs | 285kg  
 Capacity 4000lbs | 2000kg  
 Dividers Available as accessory



### TACTICAL BASKET HG XL

PC: SC-BA-XL-HG-01

Size (W/D/H) 84/52/43 [in] | 213/132/110 [cm] Perfect fit for for 463L pallets and 20ft containers, with half-gate front and gas lift assisted top opening.  
 Weight 660lbs | 300kg  
 Capacity 4000lbs | 2000kg  
 Dividers Available as accessory



### TACTICAL BASKET HEAVY DUTY XXL

PC: SC-BA-XX-2D-02

Size (W/D/H) 104/42/31 [in] | 264/106/78 [cm] Perfect fit on 463L pallets and 20ft shipping containers, with hinged front and gas lift assisted top opening. Internal forklift pockets for rapid loading.  
 Weight 720lbs | 320kg  
 Capacity 7000lbs | 3200kg



### LOCKER BASKET MEDIUM

PC: SC-BA-MD-GD-03

Size (W/D/H) 70/41/79 [in] | 178/105/200 [cm] Perfect fit for TRICON, with gated bottom for bulky items and double doors and shelves above for accessories.  
 Weight 700lbs | 320kg  
 Capacity 4000lbs | 2000kg



### LOCKER BASKET XL

PC: SC-BA-XL-GD-03

Size (W/D/H) 84/52/81 [in] | 213/132/205 [cm] Perfect fit for 10ft, 20ft and 463L pallet, with gated bottom for bulky items and double doors and shelves above for accessories.  
 Weight 860lbs | 390kg  
 Capacity 4000lbs | 2000kg



### FALCON

PC: SC-BA-SL-2W-01

Size (W/D/H) 67/60/46 [in] | 169/152/117 [cm] The FALCON has double-hinged panels on each side to enable access from top and side when floor height is at a premium.  
 Weight 615lbs | 280kg  
 Capacity 4000lbs | 2000kg



### EURO 1500

PC: SC-LT-EU-00-01

Size (W/D/H) 47/31/59 [in] | 120/80/150 [cm] Collapsible, with bottom made from hard wood EUR-Pallet.  
 Weight 300lbs | 150kg  
 Capacity 2000lbs | 1000kg



### ORIGINAL LONG SHELF MEDIUM

PC: SC-CI-MD-3P-03

Size (W/D/H) 70/41/78 [in] | 178/104/198 [cm] Perfect fit for TRICON shipping container and good fit in 20ft. Shelf levels are split in the middle.  
 Weight 600lbs | 275kg  
 Capacity 5000lbs | 2250kg



### WST III

PC: SC-WS-HD-TP-80

Size (W/D/H) 44/55/67\* [in] | 111/139/170\* [cm] Identical to the WST II (SC-WS-HD-TP-01), but with a plated top and a middle divider between the two-wheel positions. All bolts are welded on to reduce the risk of FOD.  
 Weight 460lbs | 210kg  
 Capacity 4000lbs | 2000kg  
 \*Adjustable height based on wheel size



### MEDIUM WST INSERT - ACCESSORY

PC: SC-TL-MD-2D-WT, FOR TACTICAL LOCKER MEDIUM SC-TL-MD-2D-02

Size (W/D/H) 65/37/2 [in] | 164/95/6 [cm] Special rack for storing and securing wheels in the TACTICAL LOCKER MEDIUM. Comes with two moveable vertical dividers.  
 Weight 71lbs | 32kg  
 Capacity 1000lbs | 500kg



### MEDIUM HAZMAT INSERT - ACCESSORY

PC: SC-HZ-MD-55-04, FOR TACTICAL LOCKER MEDIUM SC-TL-MD-2D-02

Size (W/D/H) 62/35/8 [in] | 158/90/21 [cm] Collects spills from up to 55 gallon drums. Easily insert into the TACTICAL LOCKER MEDIUM with a forklift. Can be used on the bottom or on a shelf.  
 Weight 310lbs | 140kg  
 Capacity 1500lbs | 700kg

LEVERAGE OUR IN HOUSE ENGINEERS FOR CUSTOM SOLUTIONS OR NEW SIZES



SEE [WWW.SHARKCAGE.COM](http://WWW.SHARKCAGE.COM) FOR MORE INSPIRATION



SC-TL-MD-2D-03

With SHARKCAGES you can secure content by locking the cage, you can move it around with a pallet jack or you can deploy with the entire cage and its contents.

For maintenance, this can result in huge process improvements, both when moving the operation and on the installation.

Maintainers we interviewed reported up to 25% improvement for the entire phased maintenance process. The largest improvements came from reduced setup time and reduced walking distance on the installation.

During deployment, they reduced packing time by roughly 80%.



Our STACK RACK makes it possible to set up a pallet rack without tools in minutes. Breaking it down, moving it and setting it up again.

This flexibility can make the warehouse layout dynamic and adapt to a specific operation and variations in storage need.

Flat packing the racks and stuffing up to 80 racks and 160 pallet spots in a 40ft shipping container makes it possible to rapidly set up

a temporary warehouse anywhere in the world, inside or out.

TX-SR-XX-ST-02



SC-CW-WW-3F-03

Supply Activities must be performed at home station, in the rear and also deployed forward. The SHARKCAGE is the perfect solution for many reasons.

The SHARKCAGE is available in several different door

configurations and with one to four lockable compartments, giving the exact setup needed and the possibility for access control.

The cages can be set up on any surface, in temporary buildings and even in containers. This gives

you the flexibility you need both at home and when deployed.

The cage can be deployed without repacking and the modularity makes it easy to deploy exactly what is needed for the mission.

To sum it up, you can deploy the entire warehouse infrastructure and operate in the exact same way, whether deployed or at home.



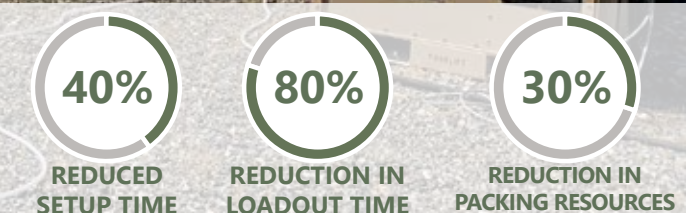
SC-BA-XL-GT-01

The modularity of the SHARKCAGES combined with their mobility capabilities make them ideal for field hospitals, TOCs or other bases which are deployed.

Breaking up and packing the load

plan in kits makes it possible to rapidly deploy a small or large base from the same stock.

The cages also makes it easier to repack the content correctly and safely in the field to ensure content does not get lost or damaged.



# intermodal

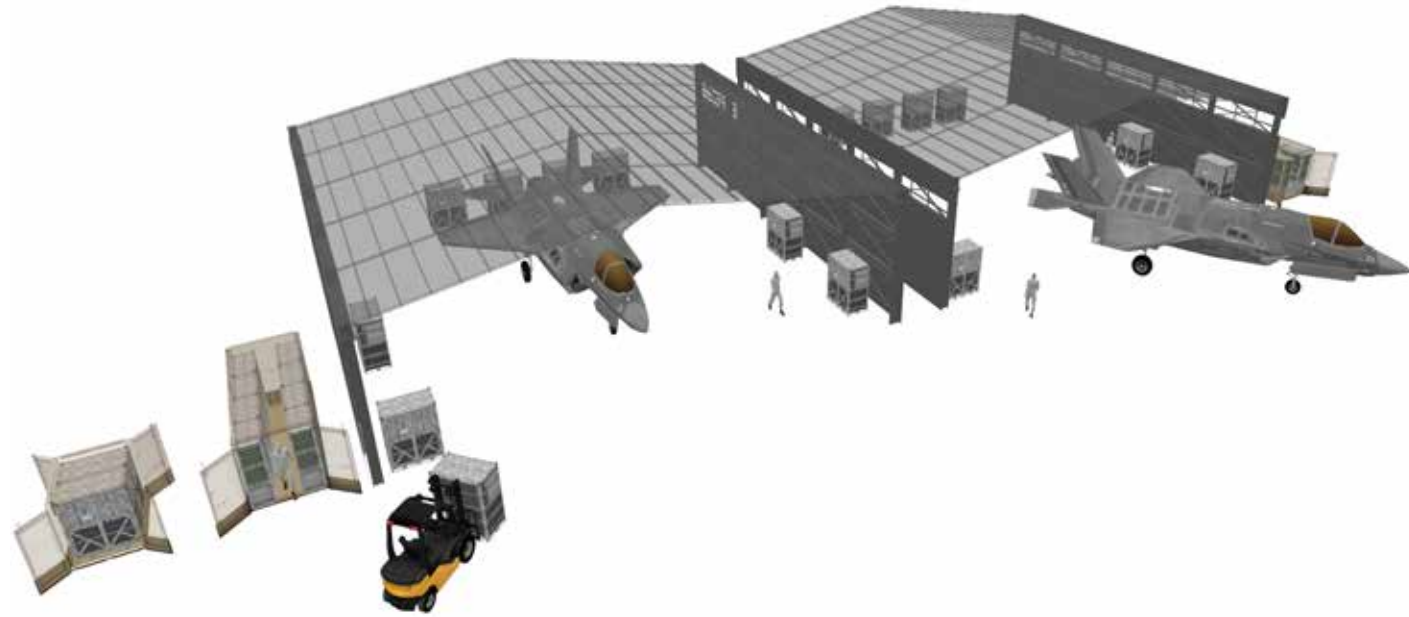
/ɪntəˈməʊd(ə)l/  
adjective

“Intermodal freight transport involves the transportation of freight in an intermodal container or vehicle, using multiple modes of transportation (e.g., rail, ship, and truck), without any handling of the freight itself when changing modes.”

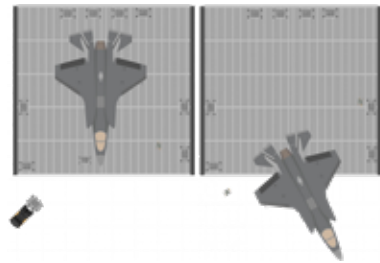
While there is an ideal platform for each SHARKCAGE, each cage still fits very well in several platforms. And the best thing is that there is no need to modify the container or air pallet — simply use standard shipping containers. This makes the SHARKCAGE the most flexible solution available for military logistics. On this page we illustrate how the SHARKCAGE TACTICAL LOCKER MEDIUM fits in different commonly used military platforms.



Free, but powerful online tool to create your own real-life layouts in 2D and 3D with cages, containers, vehicles and buildings. Visualize your load plan, warehouse or maintenance area for better planning. Try it now!



**FREE TO USE**  
**NO DOWNLOAD NEEDED**



### BUILD YOUR LAYOUT

Build your layout with a library of real-size containers, vehicles, people and other objects. Work directly in your browser without downloading any software and see the layout in top view, or directly in 3D view.



### ADD SHARKCAGE

Outfit your layout with the SHARKCAGES you need to get a lean logistic operation. Our product line ensures maximum flexibility and organization in any scenario.



### EXPORT THE LAYOUT

Download and review your plan with a table including NSN for each SHARKCAGE and one sheet for each product. Purchase directly from SHARKCAGE or through Governmental agencies: DLA(NSN), DLA(TLS), GSA or MRO.

## WE ARE TEAM SHARKCAGE



### TEAM

SHARKCAGE is an international company with offices in the US and EU. We are proud that we have the largest share of former US military personnel employees compared to any of our competitors. More than half of our employees are former military, even when including our direct sub-suppliers and production<sup>1</sup>.

We believe in producing where we get the best quality and price for each specific part and limit ourselves to Buy American Act compliant<sup>2</sup> suppliers, even though it is not a requirement.

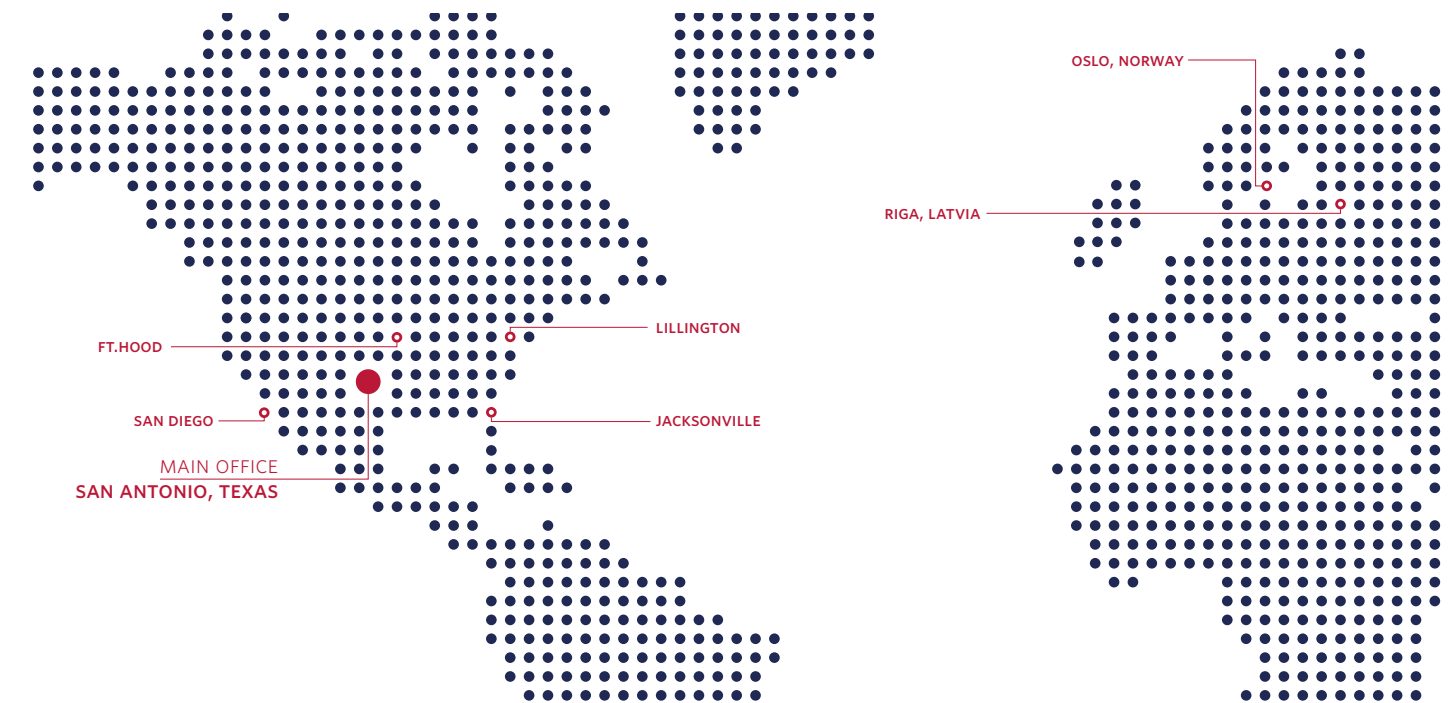
SHARKCAGE has focused solely on military logistics for more than two decades and we have been working closely with US troops and NATO forces since 1998.

Through product development according to relevant MIL-STD and STANAGS with extensive testing, and customer feedback from military operations, we have created products that solve a broad spectrum of logistical challenges.

It is more important than ever that warfighters can react quickly to crises and conflicts all over the world. Our storage products are developed to move seamlessly between storage, transport, and operation, giving the customer the necessary flexibility to reduce load out times, transition rapidly and increase material security. With SHARKCAGE storage products, the US Military and other NATO forces are always ready to deploy.

<sup>1</sup>Based on 2019 numbers. Salary cost for sub-suppliers allocated based on work done for us.

<sup>2</sup>SHARKCAGE even buy raw-material and components from Buy American Act compliant countries whenever possible.



SHARKCAGE INC / SPRING BRANCH, TX 78070 / USA / PH: 888-350-CAGE  
SHARKCAGE AS / OSLO / NORWAY / PH: +47 6669 6670  
SHARKCAGE SIA / RIGA / LATVIA





# ALWAYS READY.

---

SHARKCAGE INC.  
1-888-350-CAGE  
SAN ANTONIO, TEXAS

SHARKCAGE AS  
+47 6669-6670  
OSLO, NORWAY

[WWW.SHARKCAGE.COM](http://WWW.SHARKCAGE.COM)